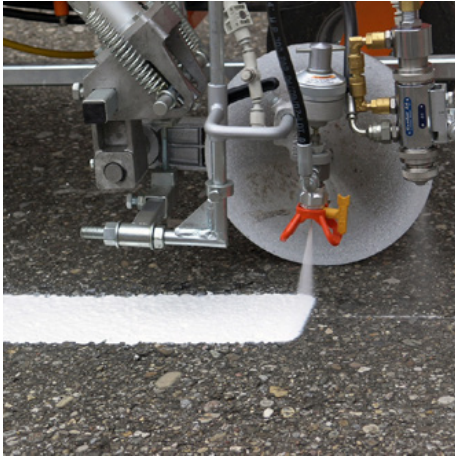


Overview



High-Solid-Colors



Epoxy-modified high-solids inks



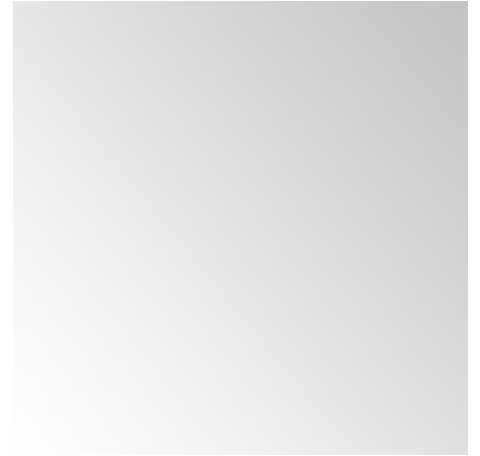
Cold spray plastics



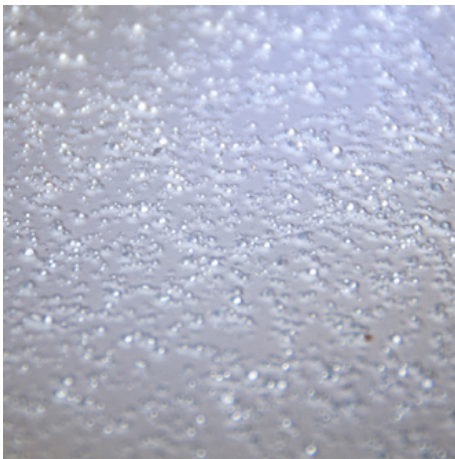
Cold plastic marking materials



Polyurethane colors



Thinner



Re-spreading agent

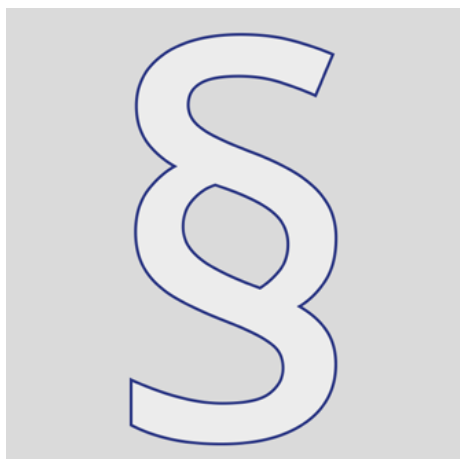


Asphalt Art®



LongLife hall marking films

Overview



Additional information

High-Solid-Colors



STRAMAT TM/56 road marking paint white in 25 kg container

STRAMAT road marking paints are mainly used on asphalt or concrete pavements, for edge and center lines, parking lots, clearance markings or other markings in public or private areas.

OKA-100.1000.001
25 kg
25 kg



STRAMAT TM/56 road marking paint traffic yellow in 25 kg container

STRAMAT road marking paints are mainly used on asphalt or concrete pavements, for edge and center lines, parking lots, clearance markings or other markings in public or private areas.

OKA-100.1100.001
25 kg
25 kg



STRAMAT TM/56 road marking paint traffic orange in 25 kg container

STRAMAT road marking paints are mainly used on asphalt or concrete pavements, for edge and center lines, parking lots, clearance markings or other markings in public or private areas.

OKA-100.2100.001
25 kg
25 kg



STRAMAT TM/56 road marking paint traffic red in 25 kg container

STRAMAT road marking paints are mainly used on asphalt or concrete pavements, for edge and center lines, parking lots, clearance markings or other markings in public or private areas.

OKA-100.3100.001
25 kg
25 kg



STRAMAT TM/56 road marking paint traffic blue in 25 kg container

STRAMAT road marking paints are mainly used on asphalt or concrete pavements, for edge and center lines, parking lots, clearance markings or other markings in public or private areas.

OKA-100.5100.001
25 kg
25 kg



STRAMAT TM/56 road marking paint traffic green in 25 kg container

STRAMAT road marking paints are mainly used on asphalt or concrete pavements, for edge and center lines, parking lots, clearance markings or other markings in public or private areas.

OKA-100.6100.001
25 kg
25 kg



STRAMAT TM/56 road marking paint gray in 25 kg container

STRAMAT road marking paints are mainly used on asphalt or concrete pavements, for edge and center lines, parking lots, clearance markings or other markings in public or private areas.

OKA-100.7100.001
25 kg
25 kg



High-Solid-Colors



STRAMAT TM/56 road marking paint black in 25 kg container

STRAMAT road marking paints are mainly used on asphalt or concrete pavements, for edge and center lines, parking lots, clearance markings or other markings in public or private areas.

OKA-100.9100.001
25 kg
25 kg



Epoxy-modified high-solids inks



STRAMAT TM/56-EP epoxy modified HS paint white in 25 kg container

The 2-component road marking paint STRAMAT 2-K-TM/56 EP is additionally epoxy-modified, which enables higher resistance, better adhesion as well as longer durability. It is particularly popular for use on difficult soils. Often also in combination with a colorless polyurethane sealer.

OKA-105.0000.001
25 kg
25 kg



STRAMAT TM/56-EP epoxy modified HS paint yellow in 25 kg container

The 2-component road marking paint STRAMAT 2-K-TM/56 EP is additionally epoxy-modified, which enables higher resistance, better adhesion as well as longer durability. It is particularly popular for use on difficult soils. Often also in combination with a colorless polyurethane sealer.

OKA-105.0100.001
25 kg
25 kg



STRAMAT TM/56-EP epoxy modified HS paint red in 25 kg container

The 2-component road marking paint STRAMAT 2-K-TM/56 EP is additionally epoxy-modified, which enables higher resistance, better adhesion as well as longer durability. It is particularly popular for use on difficult soils. Often also in combination with a colorless polyurethane sealer.

OKA-105.3020.001
25 kg
25 kg



STRAMAT TM/56-EP epoxy modified HS paint blue in 25 kg container

The 2-component road marking paint STRAMAT 2-K-TM/56 EP is additionally epoxy-modified, which enables higher resistance, better adhesion as well as longer durability. It is particularly popular for use on difficult soils. Often also in combination with a colorless polyurethane sealer.

OKA-105.5100.001
25 kg
25 kg



STRAMAT TM/56-EP epoxy modified HS paint green in 25 kg container

The 2-component road marking paint STRAMAT 2-K-TM/56 EP is additionally epoxy-modified, which enables higher resistance, better adhesion as well as longer durability. It is particularly popular for use on difficult soils. Often also in combination with a colorless polyurethane sealer.

OKA-105.6100.001
25 kg
25 kg

STRAMAT TM/56-EP epoxy modified HS paint red in 25 kg container

The 2-component road marking paint STRAMAT 2-K-TM/56 EP is additionally epoxy-modified, which enables higher resistance, better adhesion as well as longer durability. It is particularly popular for use on difficult soils. Often also in combination with a colorless polyurethane sealer.

OKA-105.7016.001
25 kg
25 kg



STRAMAT TM/56-EP epoxy modified HS paint black in 25 kg container

The 2-component road marking paint STRAMAT 2-K-TM/56 EP is additionally epoxy-modified, which enables higher resistance, better adhesion as well as longer durability. It is particularly popular for use on difficult soils. Often also in combination with a colorless polyurethane sealer.

OKA-105.9005.001
25 kg
25 kg



Epoxy-modified high-solids inks



Hardener for STRAMAT TM/56-EP in 2.5 kg container

Hardener to epoxy-modified HS-Farbe.

OKA-105.K200.001
2.5 kg
2.5 kg



Cold spray plastics

STRAMAT cold spray plastic white in 25 kg container



weiss

STRAMAT cold spray plastic is solvent-free and based on reactive methacrylate resins. This is universally applicable in the field of permanent marking and is suitable for application by means of machine spray application (low pressure or airless).

OKA-120.0000.A11
25 kg
25 kg



Cold plastic marking materials



Cold plastics to roll up



Cold plastics for filling



Cold plastics to roll up



Cold plastic powder hardener in 150 g container

Hardener powder (peroxide hardener) for all cold plastic materials

OKA-110.K200.150
150 g
0.15 kg



STRAMAT 2K Rollplastik 2K/4H white in 12 kg container

STRAMAT 2K traffic surface coating is a reactive multi-component cold plastic system with excellent abrasion resistance and high grip.

OKA-113.0000.001
12 kg
12 kg



STRAMAT 2K Rollplastik 2K/4H yellow in 12 kg container

STRAMAT 2K traffic surface coating is a reactive multi-component cold plastic system with excellent abrasion resistance and high skid resistance.

OKA-113.1023.001
12 kg
12 kg



STRAMAT 2K Rollplastik 2K/4H traffic green in 12 kg container

STRAMAT 2K traffic surface coating is a reactive multi-component cold plastic system with excellent abrasion resistance and high skid resistance.

OKA-113.2003.001
12 kg
12 kg



STRAMAT 2K Rollplastik 2K/4H traffic red in 12 kg container

STRAMAT 2K traffic surface coating is a reactive multi-component cold plastic system with excellent abrasion resistance and high skid resistance.

OKA-113.3020.001
12 kg
12 kg



STRAMAT 2K Rollplastik 2K/4H blue in 12 kg container

STRAMAT 2K traffic surface coating is a reactive multi-component cold plastic system with excellent abrasion resistance and high skid resistance.

OKA-113.5012.001
12 kg
12 kg



STRAMAT 2K Rollplastik 2K/4H traffic grey in 12 kg container

STRAMAT 2K traffic surface coating is a reactive multi-component cold plastic system with excellent abrasion resistance and high skid resistance.

OKA-113.7042.001
12 kg
12 kg

Cold plastics to roll up



STRAMAT 2K Rollplastic 2K/4H black in 12 kg container

STRAMAT 2K traffic surface coating is a reactive multi-component cold plastic system with excellent abrasion resistance and high skid resistance.

OKA-113.9005.001
12 kg
12 kg



STRAMAT 2K Rollplastik 2K/4H traffic green in 12 kg container

STRAMAT 2K traffic surface coating is a reactive multi-component cold plastic system with excellent abrasion resistance and high skid resistance.

OKA-113-6024-001
12 kg
12 kg



Cold plastics for filling



Cold plastic powder hardener in 150 g container

Hardener powder (peroxide hardener) for all cold plastic materials

OKA-110.K200.150
150 g
0.15 kg



STRAMAT 2K rubbing plastic 2K/4H white in 10 kg container

STRAMAT 2K traffic surface coating is a reactive multi-component cold plastic system with excellent abrasion resistance and high grip. The marking surfaces produced are permanently elastic, weather-resistant and have a long service life.

OKA-114.0000.01
10 kg
10 kg



STRAMAT 2K rubbing plastic 2K/4H traffic red in 10 kg container

STRAMAT 2K traffic surface coating is a reactive multi-component cold plastic system with excellent abrasion resistance and high grip. The marking surfaces produced are permanently elastic, weather-resistant and have a long service life.

OKA-114.3020.001
10 kg
10 kg



STRAMAT 2K rubbing plastic 2K/4H traffic green in 10 kg container

STRAMAT 2K traffic surface coating is a reactive multi-component cold plastic system with excellent abrasion resistance and high grip. The marking surfaces produced are permanently elastic, weather-resistant and have a long service life.

OKA-114.6024.001
10 kg
10 kg



STRAMAT 2K rubbing plastic 2K/4H traffic yellowbin in 10 kg container

STRAMAT 2K traffic surface coating is a reactive multi-component cold plastic system with excellent abrasion resistance and high grip. The marking surfaces produced are permanently elastic, weather-resistant and have a long service life.

OKA-114-1023.001
10 kg
10 kg



STRAMAT 2K rubbing plastic 2K/4H traffic blue in 10 kg container

STRAMAT 2K traffic surface coating is a reactive multi-component cold plastic system with excellent abrasion resistance and high grip. The marking surfaces produced are permanently elastic, weather-resistant and have a long service life.

OKA-114-5017.001
10 kg
10 kg



STRAMAT 2K rubbing plastic 2K/4H traffic grey in 10 kg container

STRAMAT 2K traffic surface coating is a reactive multi-component cold plastic system with excellent abrasion resistance and high grip. The marking surfaces produced are permanently elastic, weather-resistant and have a long service life.

OKA-114-7042.001
10 kg
10 kg

Polyurethane colors



STRAMAT 2K PU hall marking paint RAL white 9010 in 5 kg container

Solvent-containing 2-component hall marking paint based on polyurethane. For highest demands on mechanical and chemical resistance, high adhesion and low susceptibility to soiling.

OKA-140.0000.001
5 kg
5 kg



STRAMAT 2K PU hall marking paint yellow RAL 1023 in 5 kg container

Solvent-containing 2-component hall marking paint based on polyurethane. For highest demands on mechanical and chemical resistance, high adhesion and low susceptibility to soiling.

OKA-140.1023.001
5 kg
5 kg



STRAMAT 2K PU hall marking paint red RAL 3020 in 5 kg container

Solvent-containing 2-component hall marking paint based on polyurethane. For highest demands on mechanical and chemical resistance, high adhesion and low susceptibility to soiling.

OKA-140.3020.001
5 kg
5 kg



Hardener for STRAMAT 2K PU hall marking paint in 0.5 kg container

Hardener to - Solvent-based 2-component hall marking paint based on polyurethane. For highest demands on mechanical and chemical resistance, high adhesion and low susceptibility to soiling.

OKA-140.K200.001
0.5 kg
0.5 kg



Thinner



Stramat thinner

All-purpose thinner 23 kg (26.65 liters) in 30 liter tin cans
For thinning 1-component paints and for use as a cleaning thinner

OKA-610
23 kg
30 kg



STRAMAT Spray Plastic Reactive Thinner in 5 kg container

For thinning spray and cold plastics.

OKA-670-05
5 kg



STRAMAT Spray Plastic Reactive Thinner in 30 kg container

For thinning spray and cold plastics.

OKA-670-30
30 kg



Re-spreading agent



Reactive beads 100-600 coated

Reaktiv glass beads for cold spray plastics in the post-scattering process
Swarco 0.1 to 0.6 mm with grip

OKA-890.0000.002
25 kg
25 kg



Reflex glass beads 180-850

Reflective glass beads 180/850
in 25 kg container

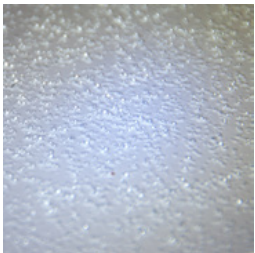
OKA-890.0000.112
25 kg
25 kg



Glassbeads size range 100 - 600 µm

Refexglass beads Lux® - high-quality products in the production range
from 100 to 600 µm.
Supplied in 25 kg bags.

WEI - 3H1
25 kg



Glassbeads size range 180 - 850 µm

Refexglass beads Lux® - high-quality products in the production range
from 63 to 850 µm.
Supplied in 25 kg bags.

WEI - 5H1
25 kg
25 kg



Asphalt Art®



Handicapped parking space from self-adhesive marking foil, blue/white, 100 x 100 cm

Made from self-adhesive Asphalt-Art® floor marking film.
For long-lasting durability, it is recommended to apply with primer.
Size: 100 x 100 cm
Version: self-adhesive, blue/white

ASA-ORI_BeHi_100_100
1 Stk.
100 x 100 cm



Disabled parking space made of marking foil, blue/white, 100 x 140 cm

Made from self-adhesive Asphalt-Art® floor marking film.
For long-lasting durability, it is recommended to apply with primer.
Size: 100 x 140 cm
Version: self-adhesive, blue/white

ASA-ORI_BeHi_100_140
1 Stk.
100 x 140 cm



No stopping and parking sign made of marking foil, gray/blue/red, 100 x 100 cm

Made from self-adhesive Asphalt-Art® floor marking film. Apply with primer for long-lasting durability.
Size: 100 x 100 cm
Finish: self-adhesive, gray/red/blue
Cut to size: square 100 x 100 cm

ASA-ORI_HPVQ_100_100
1 Stk.
100 x 100 cm



No stopping and parking sign made of marking foil, blue/red, 100 x 100 cm round

Made from self-adhesive Asphalt-Art® floor marking film. Apply with primer for long-lasting durability.
Size: 100 x 100 cm
Finish: self-adhesive, red/blue
Cut to size: round approx. 100 x 100 cm

ASA-ORI_HPVR_100_100
1 Stk.
100 x 100 cm



Parking symbol made of marking film, blue/white, 100 x 100 cm

Made from self-adhesive Asphalt-Art® floor marking film. Apply with primer for long-lasting durability.
Size: 100 x 100 cm
Finish: self-adhesive, blue/white
Cut to size: square 100 x 100 cm

ASA-ORI_Par_100_100
1 Stk.
100 x 100 cm



No parking sign made of marking foil, gray/blue/red, 100 x 100 cm

Made from self-adhesive Asphalt-Art® floor marking film. Apply with primer for long-lasting durability.
Size: 100 x 100 cm
Finish: self-adhesive, gray/red/blue
Cut to size: square 100 x 100 cm

ASA-ORI_PVQ_100_100
1 Stk.
100 x 100 cm



No parking sign made of marking foil, blue/red, 100 x 100 cm round

Made from self-adhesive Asphalt-Art® floor marking film. Apply with primer for long-lasting durability.
Size : 100 x 100 cm
Finish: self-adhesive, red/blue
Cut to size: round approx. 100 x 100 cm

ASA-ORI_PVR_100_100
1 Stk.
100 x 100 cm



Asphalt Art®



Stop made of marking foil, black/red/white, 100 x 100 cm

Made from self-adhesive Asphalt-Art® floor marking film. Apply with primer for long-lasting durability.

Size: 100 x 100 cm

Design: self-adhesive, black/red/white

Cut to size: square 100 x 100 cm

ASA-ORI_Stgr_100_100

1 Stk.

100 x 100 cm



Stop made of marking foil, black/red/white, 100 x 100 cm

Made from self-adhesive Asphalt-Art® floor marking film. Apply with primer for long-lasting durability.

Size: 100 x 100 cm

Finish: self-adhesive, black/red/white

Cut to size: 8-cornered cut

ASA-ORI_Stop_100_100

1 Stk.

100 x 100 cm



LongLife hall marking films



LongLife floor marking tape 100 mm, 50 meters

myLean® floor markings can be used for almost all indoor surfaces. Our floor markings are self-adhesive and therefore quick and easy to apply. rLongLife floor markings are forklift-proof, even against turning on the marking.

MYL-LL-100
1 Stk.
50 x 100 m



LongLife floor marking tape anti-slip 100 mm, 18 meters

myLean® floor markings can be used on almost all indoor surfaces. Our floor markings are self-adhesive and therefore quick and easy to apply. rLongLife anti-slip floor markings are sanded and therefore slip-resistant.

MYL-LL-100-AR
1 Stk.
18 x 100 m



LongLife floor marking tape 50 mm, 50 meters

myLean® floor markings can be used on almost all indoor surfaces. Our floor markings are self-adhesive and therefore quick and easy to apply. rLongLife floor markings are forklift-proof, even against turning on the marking.

MYL-LL-50
1 Stk.
50 x 50 m



LongLife floor marking tape anti-slip 50 mm, 18 meters

myLean® floor markings can be used on almost all indoor surfaces. Our floor markings are self-adhesive and therefore quick and easy to apply. rLongLife anti-slip floor markings are sanded and therefore slip-resistant.

MYL-LL-50-AR
1 Stk.
18 x 50 m



LongLife floor marking tape hatched black/ yellow 50 mm, 25 meters

myLean® floor markings can be used on almost all indoor surfaces. Our floor markings are self-adhesive and therefore quick and easy to apply. rLongLife floor markings are forklift-proof, even against turning on the marking.

MYL-LL50-SG
1 Stk.
25 x 50 m



LongLife floor marking tape 75 mm, 50 meters

myLean® floor markings can be used for almost all indoor surfaces. Our floor markings are self-adhesive and therefore quick and easy to apply. LongLife floor markings are forklift-proof, even against turning on the marking.

MYL-LL-75
1 Stk.
50 x 75 m



LongLife floor marking tape anti-slip 75 mm, 18 meters

myLean® floor markings can be used on almost all indoor surfaces. Our floor markings are self-adhesive and therefore quick and easy to apply. rLongLife anti-slip floor markings are sanded and therefore slip-resistant.

MYL-LL-75-AR
1 Stk.
18 x 75 m



LongLife hall marking films



LongLife floor marking tape hatched black/ yellow 75 mm, 25 meters

myLean® floor markings can be used on almost all indoor surfaces. Our floor markings are self-adhesive and therefore quick and easy to apply. rLongLife floor markings are forklift-proof, even against turning on the marking.

MYL-LL75-SG

1 Stk.
25 x 75 m

LongLife transparent bottom window for DIN A5 labeling



Our floor windows are used to attach printed documents to the floor or walls, allowing areas to be marked easily and securely.
Packaging unit: 10 pieces

MYL-LL-KL-A

10 Stk.
310 x 250 mm

LongLife transparent bottom window for DIN A4 labeling



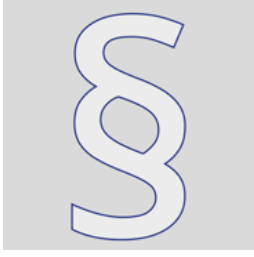
Our floor windows are used to attach printed documents to the floor or walls, allowing areas to be marked easily and securely.
Packaging unit: 10 pieces

MYL-LL-KL-A4-0

10 Stk.
400 x 310 mm



Additional information



Additional information

Any prices quoted are valid for 2 months from the date of issue.
Prices are net prices. Delivery ex works (Incoterm - EXW)
We assume no liability for the topicality, correctness and completeness of the information.
Our general terms and conditions apply!
https://shop.stramat.com/data/dokumente/AGB_de.pdf

STR_zz_§

