

DON'T LET WET AND COLD SURFACES SLOW YOU DOWN!



DRYING SPEED UP TO 3.5 KM/H

NON-FLAMMABLE

LOW FUEL CONSUMPTION

DRYING WIDTHS 20 - 100 CM

BETTER ADHESION

TELEMATICS REPORTING & DIAGNOSTICS

EXTENDED NUMBER OF OPERATION DAYS

ERGONOMIC AND USER - FRIENDLY DESIGN

**VIEW DATA
ON YOUR
MOBILE
DEVICES**

**TAPE
MARKING**



**CONCRETE
DRYING**



**ROAD
MARKING**



**CRACK
REPAIR-FILL**



ROOFING



ZIROCCO

DRY SURFACES UP TO 10 TIMES FASTER!

With our jet dryers, you can dry, heat, and clean much faster and deeper into the pores of the surfaces with non-flammable hot air, than with any other methods.

The quality of the line marking, membrane- and sealing work becomes even better and safer, because of cleaner and dry surfaces, which improve the adhesion.

Utilise the various nozzles for optimal performance and fuel efficiency.

Change nozzles quickly with the Zirocco quick release system.

Document the completed jobs via google maps and time recording.



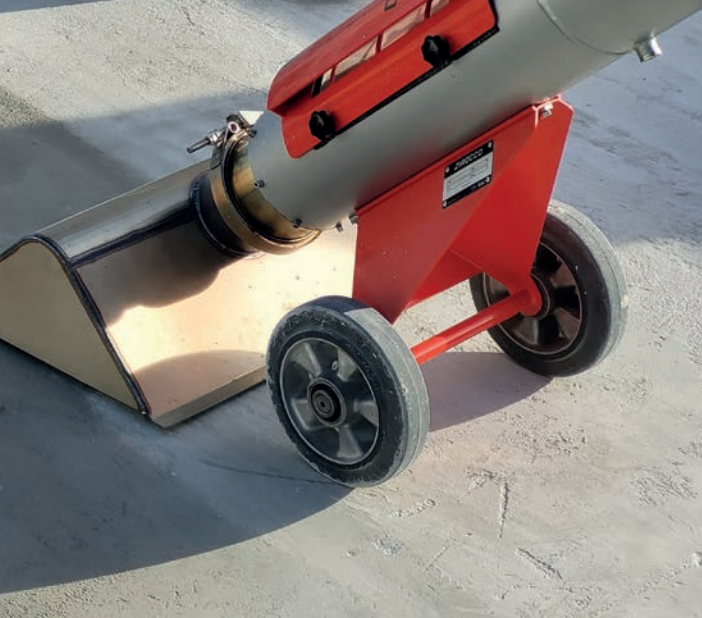
LINE MARKING

Extend the season of work, get better quality and dry much faster and easier with jet dryers prior to your line - and road marking work at car parks, roads, runways and aprons, race tracks and railway platforms. Use the wider nozzles for areas or lines with larger sizes.



ROOFING

Dry roofs up to 10 times faster and reduce manpower and the downtime with non-flammable hot air. The non-flammable heating ensures safety by minimizing fire hazards, a crucial consideration in roofing operations, where the risk of ignition can be high.



Dry and clean much faster and deeper into the pores of the surfaces, which increase the quality and durability of the sealings. At the same time our jet dryers enable you to finish the work in time, because the cracks and fugues can be dried and cleaned within only few minutes.



Improve the quality of your waterproofing and avoid the use of tents and other very resource demanding and cumbersome methods.

Use the one-man operated jet dryer to dry and clean instantly and efficiently, just before your planned waterproofing activities.

ZIROCCO

Our jet dryers are the most effective solution for drying and cleaning of surfaces at airports, on roads, bridges, roofs, and other areas before the completion of crack and joint sealing, road/line marking, road safety tape application, asphalt paving, and membrane and roof felt applications.

Leading fuel efficiency and nozzle design makes our jet dryers the most cost-effective solution for drying of all types of surfaces.



THE WORLD'S MOST COMPACT AND VERSATILE JET SURFACE DRYERS



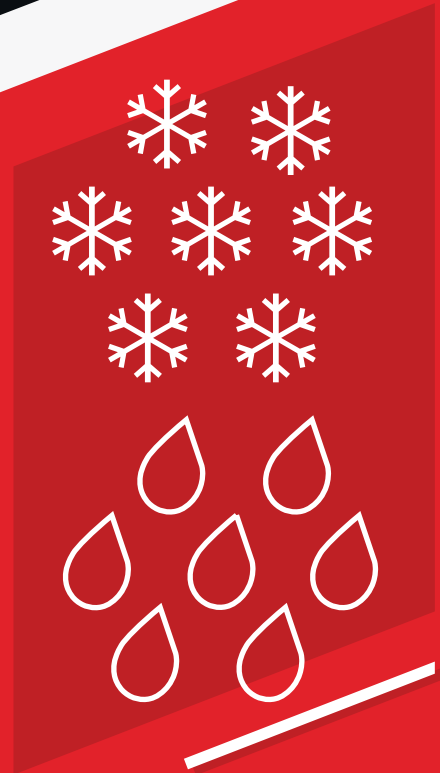
HAMMER JET

- Compact and ergonomic
- Drying speed 2.5 km/h
- Up to 360 m on a fuel tank
- Only 24 kg
- Various nozzle sizes
- Standard Makita battery



HAMMER JET MAX

- Powerful and compact
- Larger fuel tank
- More battery power
- Drying speed 3.5 km/h
- Only 26 kg
- Up to 720 m on a fuel tank
- Various nozzle sizes
- Standard Makita battery



Powerful

Effective

User friendly

Tracking & Diagnostics

Various nozzles

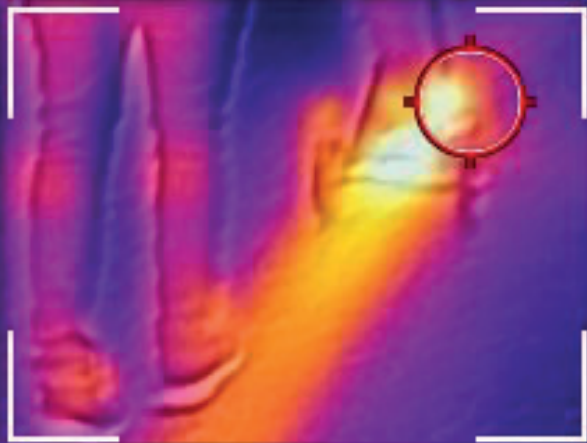
Low CO2 emission

Ergonomic design

Easy to transport



**DRY
SURFACES
UP TO
10 TIMES
FASTER!**



HAMMER JET

HAMMER JET MAX

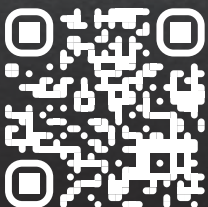
Drying speed	Up to 2.5 km/h	Up to 3.5 km/h
Drying widths / nozzle variations	20-100 cm Delivered with 20 cm nozzle	20-100 cm Delivered with 20 cm nozzle
Dimensions & weight	H: 152 cm W: 37 cm - 24 kg excl. fuel	H: 152 cm W: 37 cm - 26 kg excl. fuel
Replaceable nozzle	The various nozzles can be replaced and installed in a few minutes	The various nozzles can be replaced and installed in a few minutes
Fuel tank capacity	3.8 L	7.3 L
Max. fuel consumption	15 L/Hour. 15-25 min. operation on a fuel tank	19 L/Hour. 23-30 min. operation on a fuel tank
Fuel specifications	Standard Diesel EN590 or Exxsol D80 Petroleum/Kerosene + 3-5% Zirocco Turbine Oil	Standard Diesel EN590 or Exxsol D80 Petroleum/Kerosene + 3-5% Zirocco Turbine Oil
Battery type	Makita standard battery	Makita standard battery
Runtime per battery	20 minutes	200 minutes
Max noise level at 100%	108 dB LWA	108 dB LWA
Operating temp. range	-10°C to +40°C	-10°C to +40°C
Turbine module service interval	100 hours (Recommended yearly) of the 4.3 kg module	100 hours (Recommended yearly) of the 4.3 kg module

Telematics reporting & diagnostics

In your control:

- Locate machines and check their status at any time
- Make reports for your clients and internal purposes
- Remote support services from Zirocco
- Use our mobile app for an overview
- Turbine diagnostics





Zirocco ApS

+45 70 23 60 80
info@zirocco.dk
www.zirocco.dk



Made in Denmark