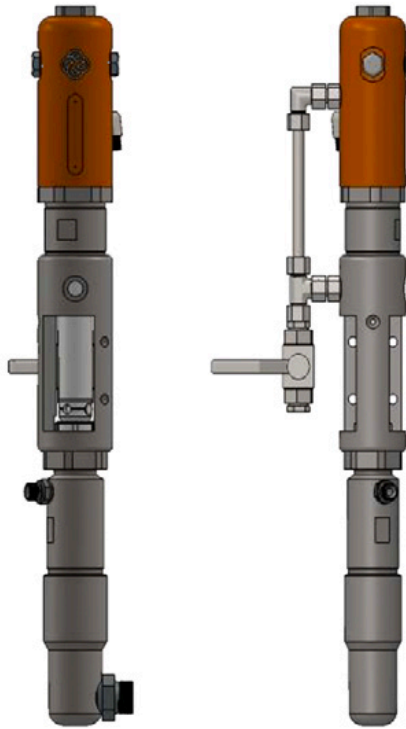


## CMC P20 Airless Pump



Item number:

CMC-P20

Created on 29.03.2024

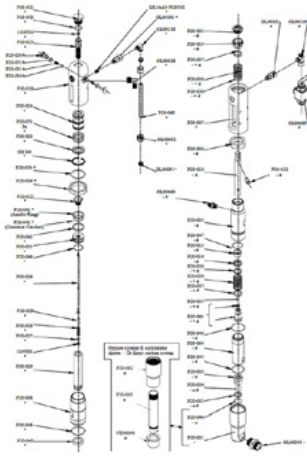
## Description

Paint flow: 6.17 liters/min

Oil flow: 16.0 liters/min

Maximum ink pressure: 230 bar

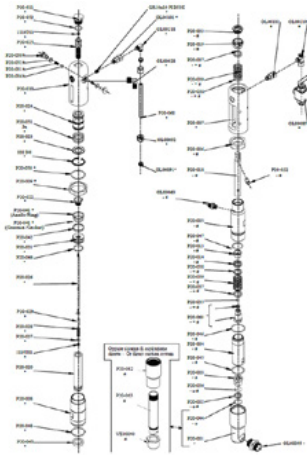
# Spare parts



## Check-Ring

Item number: CMC-8035

---

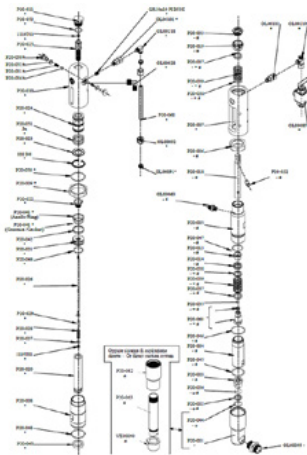


## Ball seat $\varnothing$ 25 for P20

Item number: CMC-P20-002

Suitable for CMC airless pump P20.

---

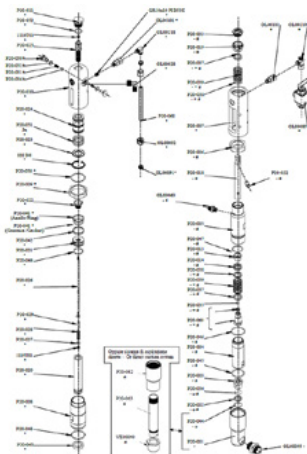


## $\varnothing$ 25 ball cage

Item number: CMC-P20-003

Suitable for CMC airless pump P20.

---



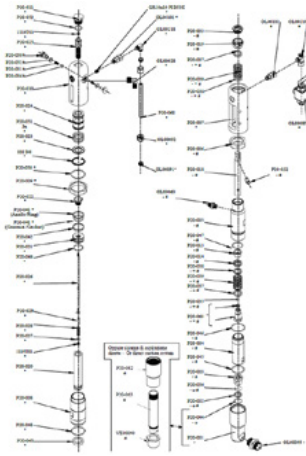
## Spindle bushing

Item number: CMC-P20-019

Suitable for CMC airless pump P20.

---

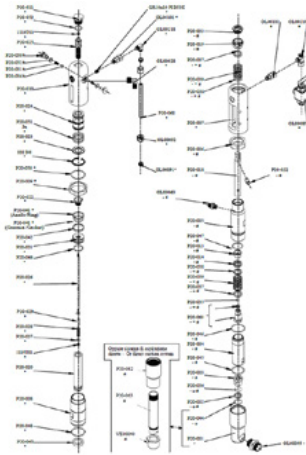
# Spare parts



## Rod working valve spring

Item number: CMC-P20-028

---

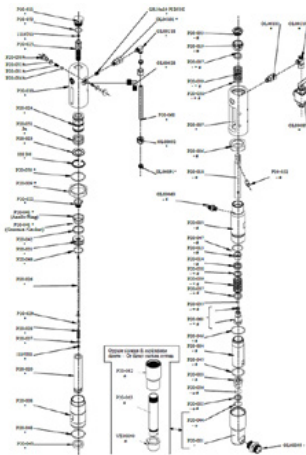


## Spring switch

Item number: CMC-P20-031

Seal kit for paint system  
suitable for airless pumps P20 and P 25

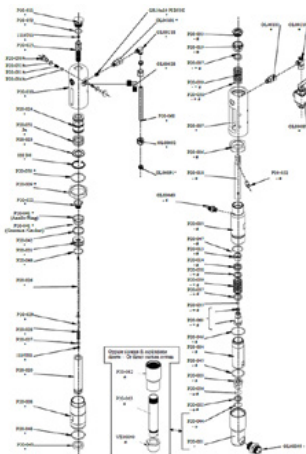
---



## Bolt

Item number: CMC-P20-032

---



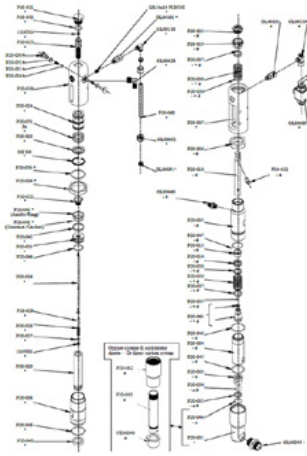
## Spindle bushing

Item number: CMC-P20-033

Suitable for CMC airless pump P20.

---

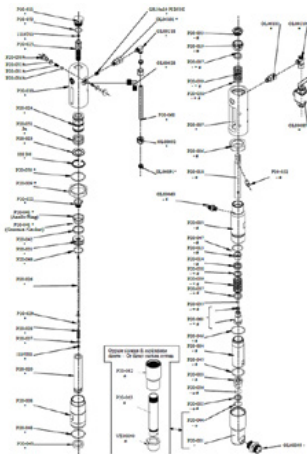
# Spare parts



## Ball

Item number: CMC-P20-034

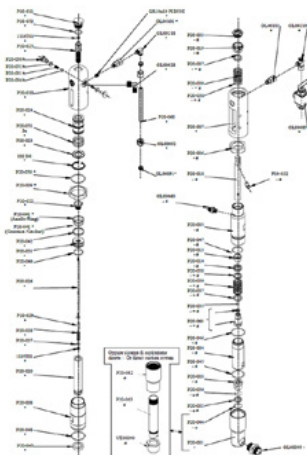
Suitable for CMC airless pump P20.



## Female washer pack

Item number: CMC-P20-037

Suitable for CMC airless pump P20.



## Female washer pack

Item number: CMC-P20-038

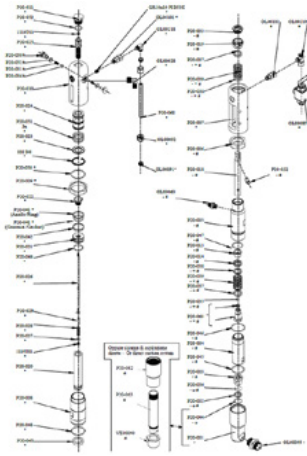
Suitable for CMC airless pump P20.



## Packing to CMC Airlesspump P20.

Item number: CMC-P20-039

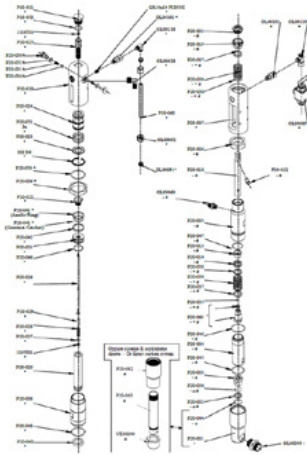
# Spare parts



## Oil piston gasket

Item number: CMC-P20-041

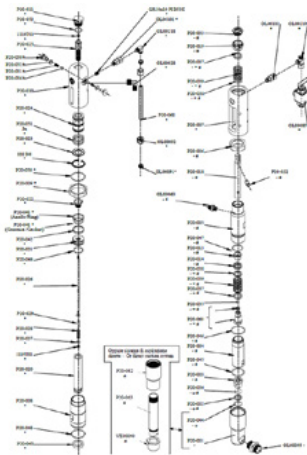
---



## Gasket

Item number: CMC-P20-043

---

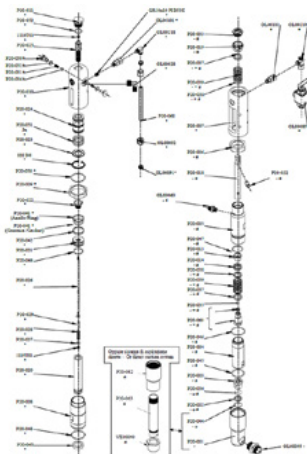


## O-ring 2112 in PTFE

Item number: CMC-P20-044

Suitable for CMC airless pump P20.

---



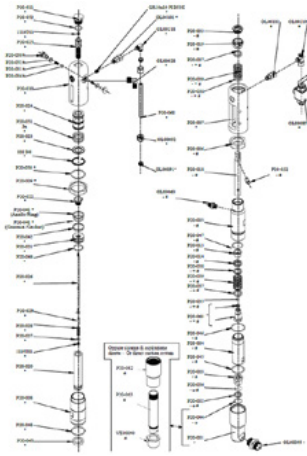
## O-ring, ø 44.5 x 3 in PTFE

Item number: CMC-P20-045

Suitable for CMC airless pump P20.

---

# Spare parts

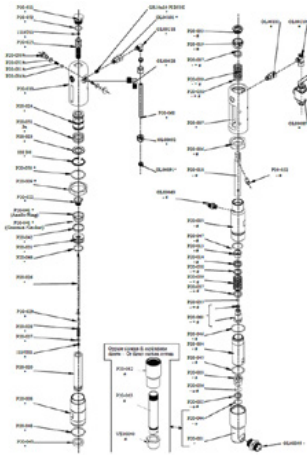


## O-ring, $\varnothing$ 27 x 3 in PTFE

Item number: CMC-P20-046

Suitable for CMC airless pump P20.

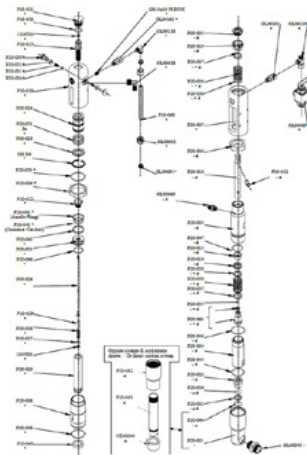
---



## O-ring 3206 IN NBR 90 Sh

Item number: CMC-P20-048

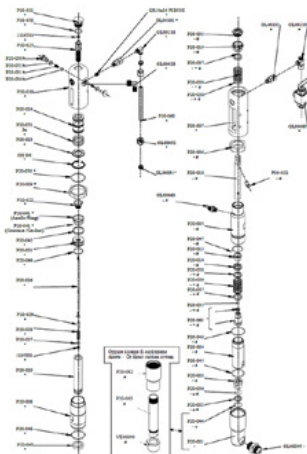
---



## O-ring $\varnothing$ 34x2,5 IN NBR 90 sH

Item number: CMC-P20-049

---

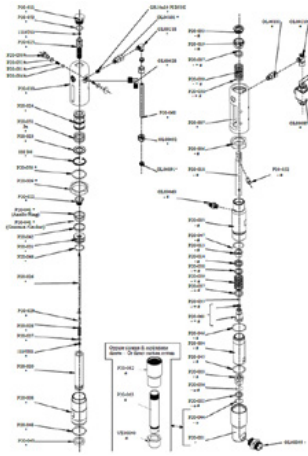


## O-ring 3212 IN NBR 90 Sh

Item number: CMC-P20-050

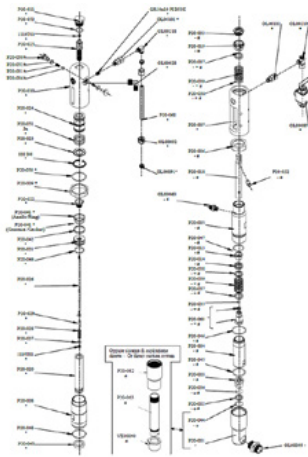
---

# Spare parts



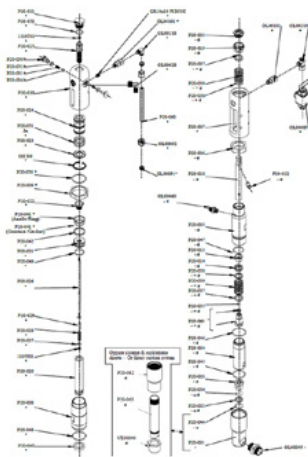
## O-ring 3156 IN NBR 90 Sh

Item number: CMC-P20-051



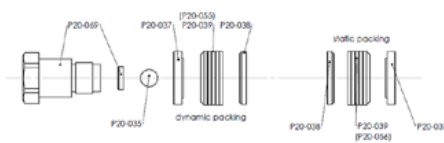
## O-ring 3100 IN NBR 90 Sh

Item number: CMC-P20-053



## Seal kit paint suction

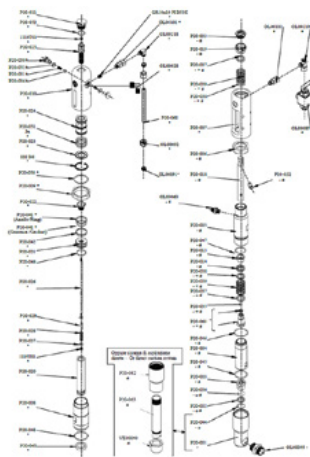
Item number: CMC-P20-091



## Gasket set color gaskets

Item number: CMC-P20-092

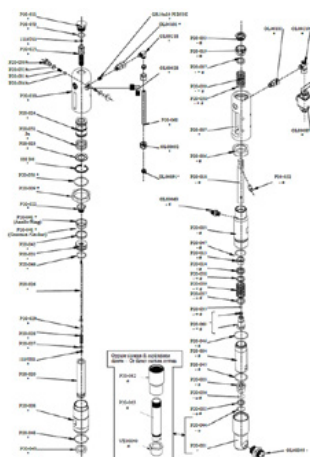
# Spare parts



## Gasket set color gaskets

Item number: CMC-P20-097

---



## Oil valve change rod

Item number: CMC-P25-026

Seal kit for paint system  
suitable for airless pumps P20 and P 25

---



# Accessories/Extensions