

CMC AR 30 Pro-CMPR-MAXX - Airless road marking machine with piston pump 6,17 L/min and compressor

Item number:
CMC-AR30PROP-CMPR

Length:
155 cm

Width:
77 cm

Height:
128 cm

Weight:
210 kg

Created on 30.12.2025



Description

Professional road marking machine for small and medium-sized jobs in the professional or municipal sector! Equipped with a piston pump, compressor and the unique RMCD - Road Marking Control Device.

Petrol engine:

- Briggs & Stratton Vanguard
- Power 6 HP
- Alternator for charging the battery
- Electric and manual starter
- Pneumatic airless gun CMC P20
- Work light and rotating light

Compressor:

- 120 liters / minute
- for pneumatic triggering of the guns

Nozzles:

- with standard nozzle: 419

Description

Optional:

- Glass bead spreader with 15.5 liter pressure tank and bead gun

Battery:

RMCD - Road Marking Control Device

Probably the easiest to use system for road marking!

With high-resolution color display and the unique RMCD-Drive!

Scalable according to your requirements!

- Line-gap machine with 8 individually adjustable presets
- Sensoric for ground temperature, air temperature and humidity
- Telematics system with automatic laying report
- Available in 12 languages
- Extremely simple operation

See our YouTube videos and the link to the RMCD website.

Extension of your hand-guided machine:

with the HMC - a hydraulically driven ride-on trolley (see the follow-up articles).

Parking brake:

Newly designed brake on the rear wheel.

Adjustable double front wheel,

to mark tight radii. It can be locked or unlocked during work using a lever on the handlebar. The steering hardness can be adjusted using a separate controller.

Telescopic visor

for simple initial marking or precise re-marking of existing lines.

Handlebar

adjustable in height.

Holder for paint bucket

(individually adjustable)

Airless hydraulic piston pump

- max. operating pressure 210 bar
- max. volume flow 6.17 l / min

Additional paint gun:

This can be used as a manual gun for stencils or surface markings, or as a gun for lines using a trigger handle. Standard nozzle for 10-20 cm line. (Line width can vary from 5 cm to 30 cm by changing the nozzle and/or adjusting the gun height)

Marker with wheel:

to keep the distance between the paint gun and the roadway constant.

MAX. LINE WIDTH:

50 cm (only possible with suitable accessories)

Spare parts



Paint guns Plug-in filter 100 mesh (yellow)

Item number: BER-2004

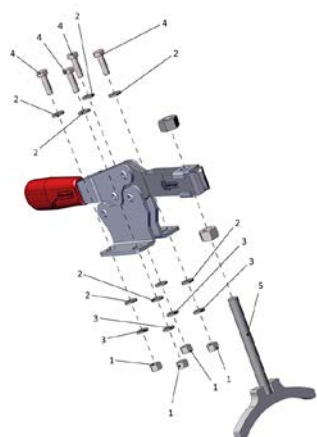
Paint gun plug-in filter 100 mesh (yellow).
For filtering the marking paint in the paint spray gun.
Ideal for polyurethane paints.



Paint guns Plug-in filter 50 mesh (white)

Item number: BER-FM2002

Paint spray gun insert filter 50 mesh (white).
For filtering your marking paint in the paint spray gun.



Parking brake complete

Item number: CMC -KIT00047

For the AR series and the HMC drive trolley.



ball valve 3/8"

Item number: CMC-00085

For switching from the backwash function to the marking function.

Spare parts



Paint hose 10 meters long

Item number: CMC-10H



Airless nozzle for surface markings 219

Item number: CMC-662-219

TITAN airless nozzle for marking surfaces, symbols, etc.

Spray angle: 20 degrees

Bore: 0.019 inch



Airless nozzle for surface marking 421

Item number: CMC-662-421

TITAN airless nozzle for marking surfaces, symbols, etc.

Spray angle: 40 degrees

Bore: 0.021 inch



Airless nozzle for surface marking 423

Item number: CMC-662-423

TITAN airless nozzle for marking surfaces, symbols, etc.

Spray angle: 40 degrees

Bore: 0.023 inch



Airless nozzle for surface marking 521

Item number: CMC-662-521

TITAN airless nozzle for marking surfaces, symbols, etc.

Spray angle: 50 degrees

Bore: 0.021 inch



Airless nozzle for line markings 215

Item number: CMC-697-215

TITAN airless nozzle for marking sharp lines.

Spray angle: 20 degrees

Bore: 0.015 inch



Airless nozzle for line marking 217

Item number: CMC-697-217

TITAN airless nozzle for marking sharp lines.

Spray angle: 20 degrees

Bore: 0.017 inch



Airless nozzle for line markings 419

Item number: CMC-697-419

TITAN airless nozzle for marking sharp lines.

Spray angle: 40 degrees

Bore: 0.019 inch



Airless nozzle for line markings 421

Item number: CMC-697-421

Titanium airless nozzle for marking sharp lines.

Spray angle: 40 degrees

Bore: 0.021 inch



Airless nozzle for line markings 423

Item number: CMC-697-423

TITAN airless nozzle for marking sharp lines.

Spray angle: 40 degrees

Bore: 0.023 inch



Airless nozzle for line markings 621

Item number: CMC-697-621

TITAN airless nozzle for marking sharp lines.

Spray angle: 60 degrees

Bore: 0.021 inch



Airless nozzle for line markings 627

Item number: CMC-697-627

TITAN airless nozzle for marking sharp lines.

Spray angle: 60 degrees

Bore: 0.027 inch

Spare parts



Airless nozzle for line marking 631

Item number: CMC-697-631

TITAN airless nozzle for marking sharp lines.

Spray angle: 60 degrees

Bore: 0.031 inch



Flange

Item number: CMC-AR30PRO-02-006

Flange for fixing the front wheel.

Suitable for AR 30 Pro models.



Bottle of 250 ml of lubricating oil

Item number: CMC-BIO46

Fluido Bio 46

Suitable for CMC piston pumps.

The special oil prevents premature wear on the pump.

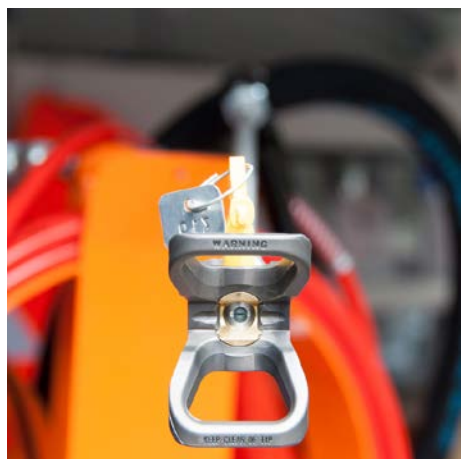


Manual Airless gun short - Model C94

Item number: CMC-C94-002

Hand guard for manual airless gun C94

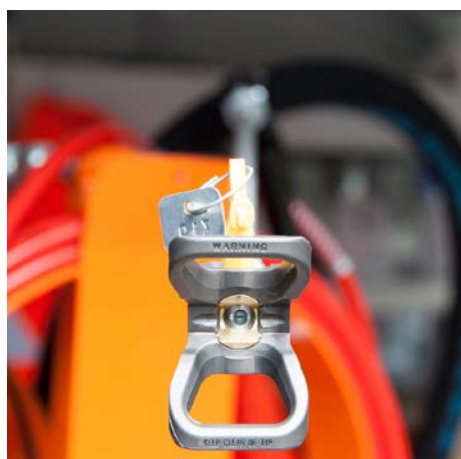
Spare parts



Nozzle extension 45 cm

Item number: CMC-C94-017

Nozzle extension 45 cm long for easy application of surfaces or even symbols.



Nozzle extension 60 cm

Item number: CMC-C94-018

Nozzle extension 60 cm long for easy application of surfaces or even symbols.



CMC Model C 94 N - Manual airless gun short

Item number: CMC-C94N

Airless gun C94 short.

Connection: 1/4 inch

Without hand guard, Without nozzle holder, Without airless nozzle



Locking pin for marker

Item number: CMC-CDK90-01-007

suitable for CMC marking machine

Cotter pin included

Spare parts



Hydraulic oil filter for AR 30 Pro P

Item number: CMC-FO-0379V

suitable for CMC marking machine

- AR 30 ITPP
- AR 30 Pro P MAXX
- AR 180



Yellow rotating beacon

Item number: CMC-FRRTG

Yellow rotating light / warning light for your marking machine.



Kit Prime Valve 3/8 inch

Item number: CMC-KIT00018

Conversion kit ball valve to new main valve.

Consisting of:

- VS38-000 main valve
- swivel fitting with return hose (with metal end)
- T-fitting for manometer



Copper sealing ring 1/2 " 21 x 27 x 1.5)

Item number: CMC-OL00190

Spare parts



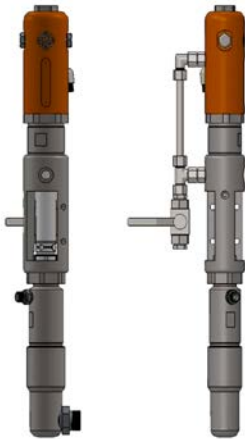
Copper Washer 3/8" (17 x 23 x 1,5)

Item number: CMC-OL00191



Connector DIR M 1/4 - F GIR 3/8

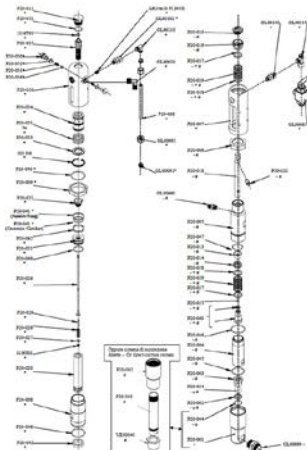
Item number: CMC-P00-027



CMC P20 Airless Pump

Item number: CMC-P20

Suitable for CMC airless pump P20.

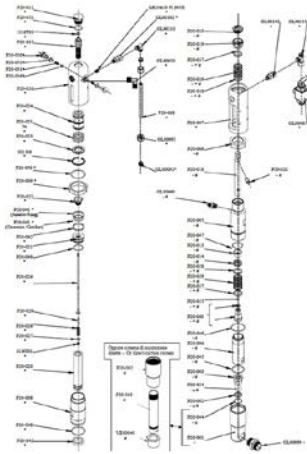


Ball seat ø 25 for P20

Item number: CMC-P20-002

Suitable for CMC airless pump P20.

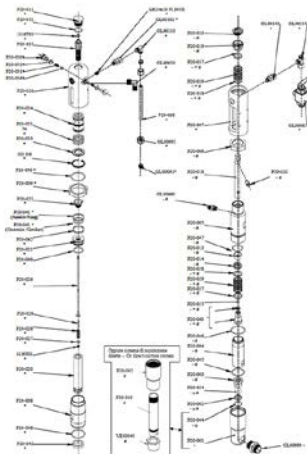
Spare parts



ø 25 ball cage

Item number: CMC-P20-003

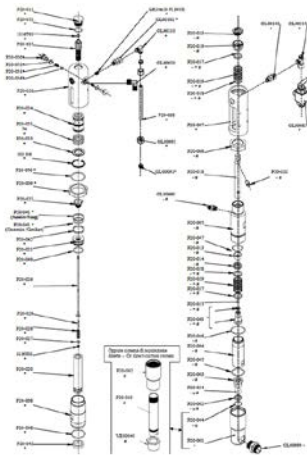
Suitable for CMC airless pump P20.



Spindle bushing

Item number: CMC-P20-019

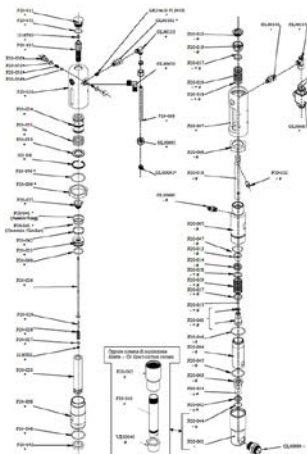
Suitable for CMC airless pump P20.



Spindle bushing

Item number: CMC-P20-033

Suitable for CMC airless pump P20.



Ball

Item number: CMC-P20-034

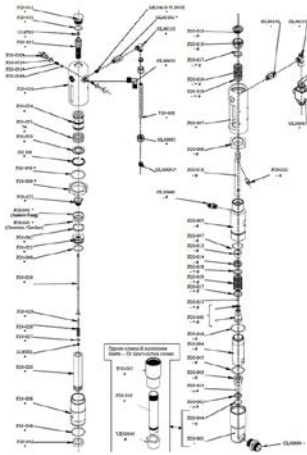
Suitable for CMC airless pump P20.

Spare parts



Packing to CMC Airlesspump P20.

Item number: CMC-P20-039



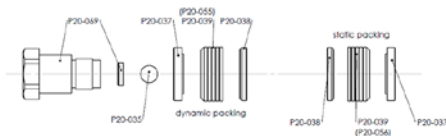
O-ring 2112 in PTFE

Item number: CMC-P20-044

Suitable for CMC airless pump P20.

Gasket set color gaskets

Item number: CMC-P20-092



Hydraulic-Oil-Filter for AR 30 Pro P

Item number: CMC-P21-015

Spare parts



Plastic tool box

Item number: CMC-PI00004

Plastic tool box

suitable for CMC marking machines.



Plastic handle

Item number: CMC-PL00044

suitable for CMC marking machine
diameter: 27 mm



Pressure regulator 1/4 inch for color or pressure system

Item number: CMC-PN00064

For switching from the backwash function to the marking function.



Manometer / Pressure gauge 400 bar

Item number: CMC-PN00211

Pressure gauge with a maximum pressure indication of 400 bar.

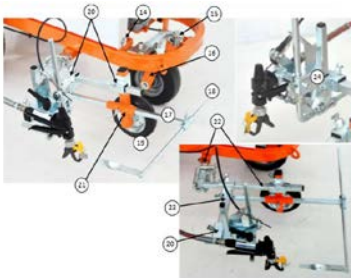
Spare parts



Pneumatic wheel (front wheel) 8/3.00X4

Item number: CMC-RU00058

Front wheel for the AR 30 series with rim.
The rubber wheel ideally compensates for slight irregularities.
Dimension: 8/3.00X4



Marking-unit with wheel

Item number: CMC-SU00030

Marker unit with plastic wheel - to keep the distance between the paint gun and the substrate always at the same level.

Codice / Code	Descrizione	Description
14	UTILE PISAGGIO CARTER	SCREW TO REMOVE PROTECTION
15	ELABORATOIO ATTIVO RUOTA ANTERIORE	PROTUSION DEVICE OF THE FRONT WHEEL
16	FORCELLA ANTERIORE	FRONT FORK
17	PIEDZO TERZIO	POD-TIER PRICE
18	PIEDZO TERZIO	POD-TIER PRICE
19	RUOTA SUPPORTO PISTOLA	WHEEL OF THE GUN SUPPORT
20	SUPPORTO A TRECE	TRICE SUPPORT
21	SUPPORTO RUOTINO E MEDIO	SUPPORT OF THE WHEEL AND OF THE ROTATOR
22	SUPPORTO SPECIALE CAROTOCORSALE COMPLETO	COMPLETE SPECIAL SUPPORT
23	TUBO SCELTA	SUPPORT OF THE GUN GROUP
24	GRUPPO PISTOLA	GUN GROUP



Pickup wheel for encoder

Item number: CMC-SU00031

For recording the speed of your machine.

Inner diameter of mount: 10 mm

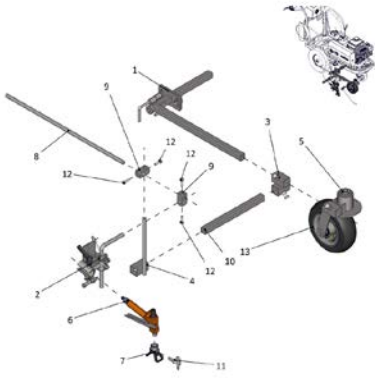


Lever for triggering the paint pistol or the rotary wheel

Item number: CMC-SU00156

suitable for AR 30 Pro series

Spare parts



Holder for marking unit (marker)

Item number: CMC-SU00222



Intake hose

Item number: CMC-TV1ASPAR30

Intake hose for the AR 30 series with diaphragm pumps.



High pressure paint hose 1/4" 10 meter

Item number: CMC-TVAPR1/410MT

High-pressure paint hose

Length: 10 meters

Connection: 1/4 inch



Circulation hose

Item number: CMC-TVAPR1/41100I

High-pressure circulation hose suitable for new changeover valve VS38-000

Spare parts



High-pressure paint hose 1/4" 15 meters long

Item number: CMC-TVAPR1/415MT

High-pressure paint hose

Length: 15 meters

Connection: 1/4 inch



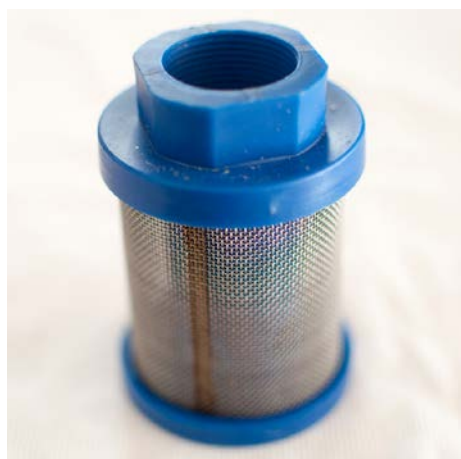
High pressure color filter 60 Mesh

Item number: CMC-VE00062

suitable for CMC marking machine

Length: 145 mm

diameter 25 mm



Suction filter blue

Item number: CMC-VE00064

Suitable for CMC machines.



High pressure paint filter 30 mesh

Item number: CMC-VE00110

suitable for CMC marking machine

Length: 145 mm

Diameter: 25 mm

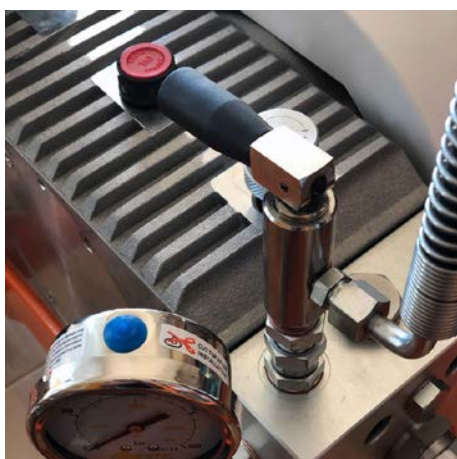
Spare parts



Nozzle holder for airless nozzle 1 1/16 " (17.4 mm) for airless nozzles

Item number: CMC-VE00123

Nozzle holder 1 1/16 " (17.4 mm) for airless nozzles

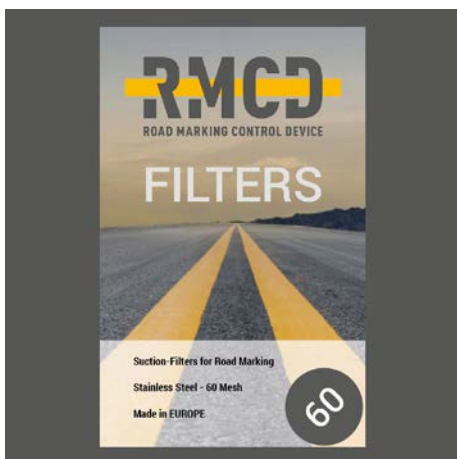


Prime Valve 3/8 inch

Item number: CMC-VS38-000

For switching from backwash to the gun.

Suitable for the CMC AR 30 series.



RMCD - Intake filter 28 x 1.5 mm - 60 mesh

Item number: RMCD-22906

Suction filter 28 x 1.5 IG 60 mesh.

Suction filter short. Reinforced version.



Second manual paint gun

Item number: CMC-2PAR30

Second manual airless gun with suspension, hose and cable release.



Airless nozzle for surface markings 219

Item number: CMC-662-219

TITAN airless nozzle for marking surfaces, symbols, etc.

Spray angle: 20 degrees

Bore: 0.019 inch



Airless nozzle for surface marking 421

Item number: CMC-662-421

TITAN airless nozzle for marking surfaces, symbols, etc.

Spray angle: 40 degrees

Bore: 0.021 inch



Airless nozzle for surface marking 423

Item number: CMC-662-423

TITAN airless nozzle for marking surfaces, symbols, etc.

Spray angle: 40 degrees

Bore: 0.023 inch



Airless nozzle for surface marking 521

Item number: CMC-662-521

TITAN airless nozzle for marking surfaces, symbols, etc.

Spray angle: 50 degrees

Bore: 0.021 inch



Airless nozzle for line markings 215

Item number: CMC-697-215

TITAN airless nozzle for marking sharp lines.

Spray angle: 20 degrees

Bore: 0.015 inch



Airless nozzle for line marking 217

Item number: CMC-697-217

TITAN airless nozzle for marking sharp lines.

Spray angle: 20 degrees

Bore: 0.017 inch



Airless nozzle for line markings 419

Item number: CMC-697-419

TITAN airless nozzle for marking sharp lines.

Spray angle: 40 degrees

Bore: 0.019 inch



Airless nozzle for line markings 421

Item number: CMC-697-421

Titanium airless nozzle for marking sharp lines.

Spray angle: 40 degrees

Bore: 0.021 inch



Airless nozzle for line markings 423

Item number: CMC-697-423

TITAN airless nozzle for marking sharp lines.

Spray angle: 40 degrees

Bore: 0.023 inch



Airless nozzle for line markings 621

Item number: CMC-697-621

TITAN airless nozzle for marking sharp lines.

Spray angle: 60 degrees

Bore: 0.021 inch



Airless nozzle for line markings 627

Item number: CMC-697-627

TITAN airless nozzle for marking sharp lines.

Spray angle: 60 degrees

Bore: 0.027 inch

Accessories/Extensions



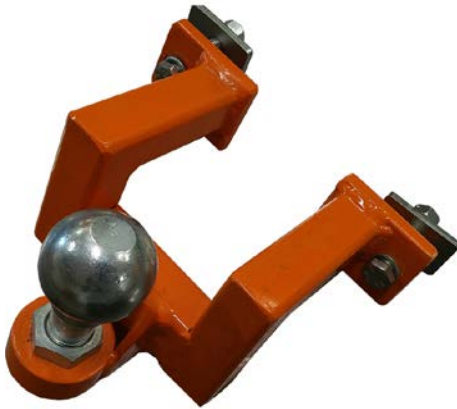
Airless nozzle for line marking 631

Item number: CMC-697-631

TITAN airless nozzle for marking sharp lines.

Spray angle: 60 degrees

Bore: 0.031 inch



Holder HMC for AR 30 Pro-P, AR 30 Pro P-25

Item number: CMC-AR30P-03-015

Suitable for the following CMC road marking machines:

AR 30 Pro P

AR 30 Pro P-25



Holder for HMC for AR 30 PRO, AR 30 PRO-2C, L 40 and MAXX

Item number: CMC-AR30PRO-02-035

Bracket for trailer hitch.



Bottle of 250 ml of lubricating oil

Item number: CMC-BIO46

Fluido Bio 46

Suitable for CMC piston pumps.

The special oil prevents premature wear on the pump.

Accessories/Extensions

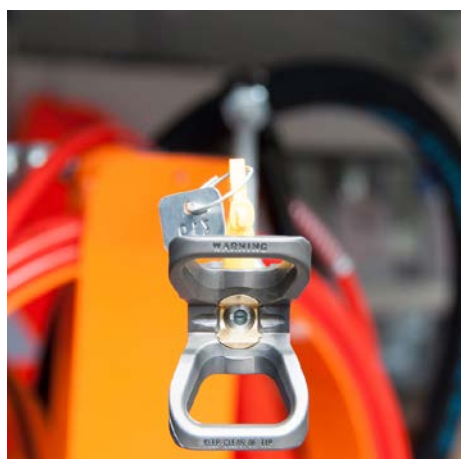


CMC C 94 Manual gun with nozzle extension and 10 meter hose

Item number: CMC-C94+P+10H

In order to also be able to carry out area markings over greater distances.

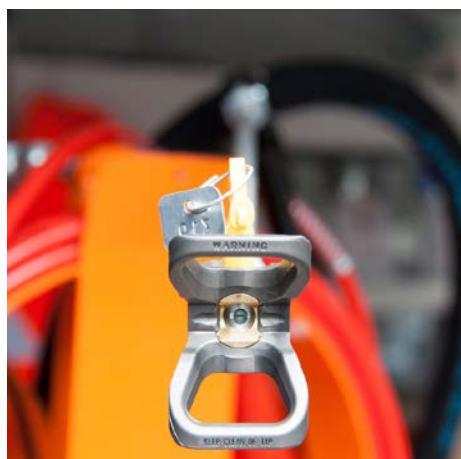
Including 45 cm nozzle extension



Nozzle extension 45 cm

Item number: CMC-C94-017

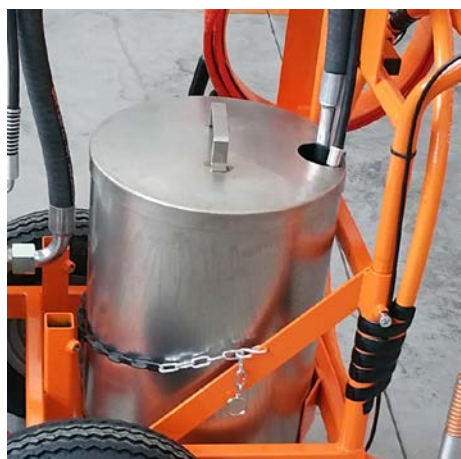
Nozzle extension 45 cm long for easy application of surfaces or even symbols.



Nozzle extension 60 cm

Item number: CMC-C94-018

Nozzle extension 60 cm long for easy application of surfaces or even symbols.



Paint-Bucket with Lid made of Stainless-Steel

Item number: CMC-CONTINOX30C

Stainless steel paint container with lid to match AR 30 series.

Diameter: 33 cm

Height: 40 cm

Capacity: Approx. 30 liters

Accessories/Extensions



Glas bead system with pressurized tank 15,5 l and glass bead gun

Item number: CMC-DISPERL254050

Glass bead system consisting of:
Pressure tank for glass beads with a capacity of 15.5 liters.
Glass bead gun for the safe and easy insertion of glass beads into the marking paint.



Glass beads system with conical glass beads spreader

Item number: CMC-DISPERLAR30-CON

Gravity glass bead scattering system with special outlet system.

This prevents the reflex glass beads from blowing away due to the apron and thus reduces the amount of material used.



Yellow rotating beacon

Item number: CMC-FRRTG

Yellow rotating light / warning light for your marking machine.



CMC - HMC drive carriage with hydraulic drive for road marking machines

Item number: CMC-HMC-B

Expand your productivity with the HMC hydraulically driven drive carriage from CMC. This can be mounted behind your hand-held road marking machine with a hitch.
With Briggs and Stratton engine.

Accessories/Extensions



CMC - HMC drive trolley with hydraulic drive for road marking machines with Honda engine.

Item number: CMC-HMC-H

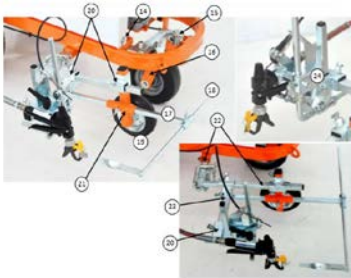
Expand your productivity with the HMC hydraulically driven drive carriage from CMC. This can be mounted behind your hand-held road marking machine with a clutch. With Honda engine.



50 liter plastic paint tank

Item number: CMC-PL00199

For the extended performance kit of your marking works. 50 liter paint tank for your CMC marking machine. Made of plastic with lid.



Marking-unit with wheel

Item number: CMC-SU00030

Marker unit with plastic wheel - to keep the distance between the paint gun and the substrate always at the same level.

Codice - Code	Descrizione	Description
14	VITE PESSAGGIO CARTER	SCREW TO REMOVE PROTECTION
15	ELABORATO DA ATTREZZO RUOTA	PROTECTOR DEVICE OF THE FRONT
16	BORSAVANTAGGIO	WHEEL
17	FORCELLA ANTERIORE	FRONT FORK
18	RUOTA	WHEEL
19	RUOTA	WHEEL
20	RUOTA	WHEEL
21	RUOTA	WHEEL
22	RUOTA	WHEEL
23	RUOTA	WHEEL
24	RUOTA	WHEEL



Hose reel for airless devices

Item number: CMC-VE00113

Hose reel for airless road marking machines. (without hose) Holds 10 meters of 1/4 inch hose or 12 meters of 3/8 inch hose.

Accessories/Extensions



Nozzle holder for airless nozzle 11/16 " (17.4 mm) for airless nozzles

Item number: CMC-VE00123

Nozzle holder 11/16 " (17.4 mm) for airless nozzles



Nozzle extension 45 cm - 11/16 inch / 17.46 mm thread made of stainless steel

Item number: RMCD-FM63010F

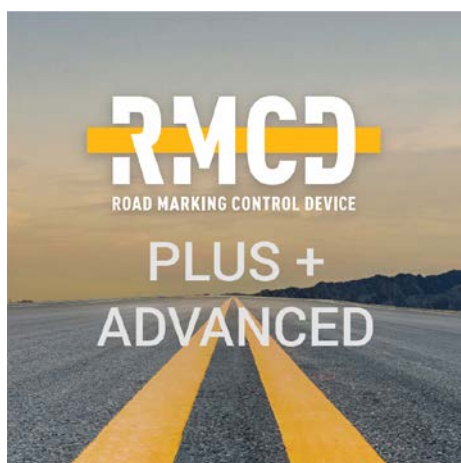
Nozzle extensions for 11/16 inch (17.46 mm) thread.

Length: 45 cm

Material: Stainless steel - Particularly sturdy and hard-wearing.

Paint gun connection: 11/16 inch / 17.46 mm

Nozzle holder connection: 11/16 inch / 17.46 mm



RMCD - Plus + Advanced

Item number: RMCD-Plus-ADV

With the RMCD-Road Marking Control Device ADVANCED, we have developed a completely new system for operating road marking machines with greater convenience, based on the RMCD-CAN bus system. The variably configurable system offers a wide range of applications.



RMCD - Plus Professional

Item number: RMCD-Plus-PRO

With the RMCD-Road Marking Control Device PROFESSIONAL, we have developed a completely new system for operating road marking machines with greater convenience, based on the RMCD-CAN bus system. The variably configurable system offers a wide range of applications.



RMCD standard

Item number: RMCD-Plus-STD

With the RMCD-Road Marking Control Device STANDARD, we have developed a completely new system for operating road marking machines with greater convenience, based on the RMCD-CAN bus system. The variably configurable system offers a wide range of applications.



Road marking catalog

Item number: STR_SM_92

Product catalog for use as an interactive pdf document!
You can use the catalog under Downloads in the language of your choice.

If you also require the catalog with prices (only for existing customers or on request), please let us know.
