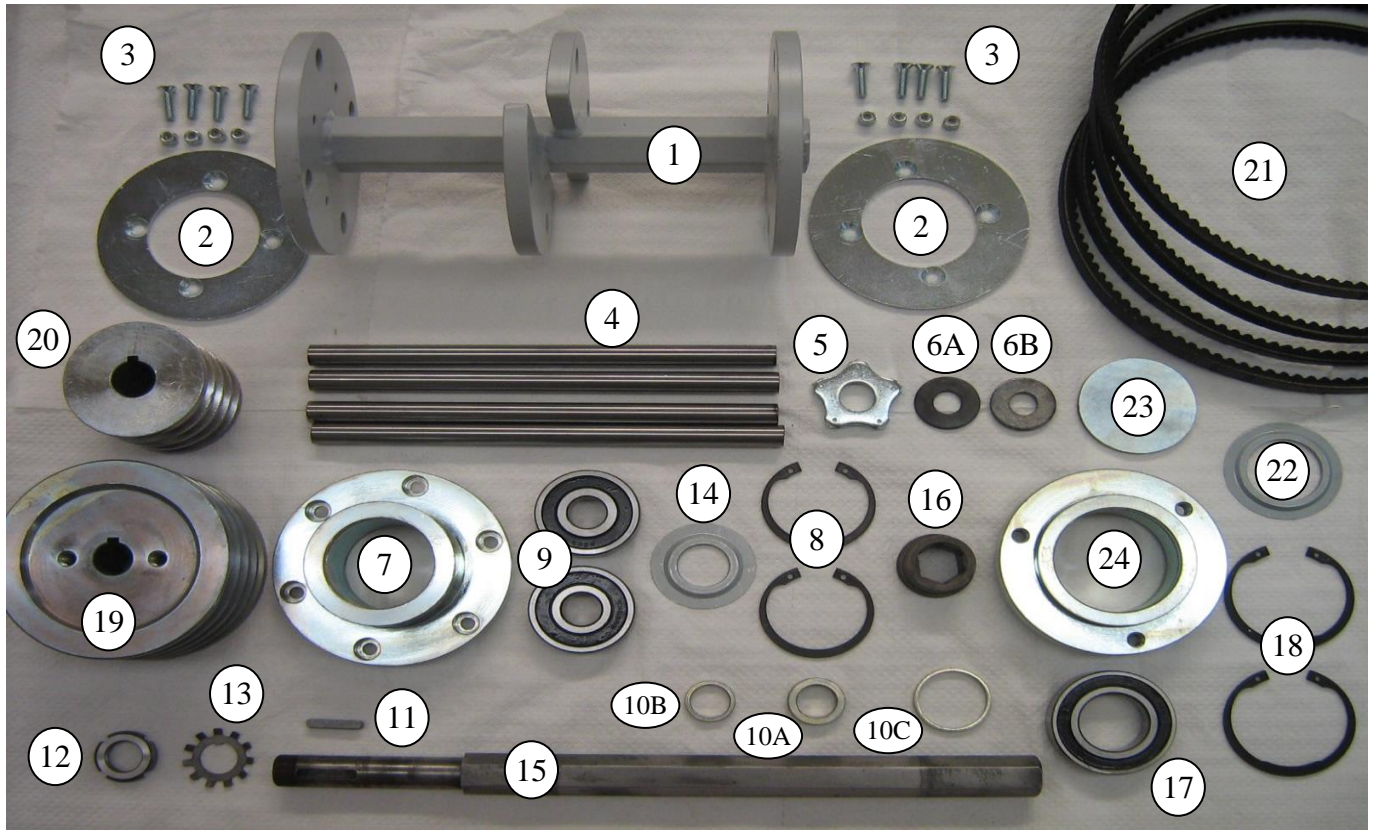


SPARE PARTS OF SCARIFIERS CM300 / CM300D



REFERENCE LIST

N°	Description	Code	N°	Description	Code
1	DRUM EMPTY	GBB300	15	HEXAGON SHAFT	15CM300
2	RETAINING COVER (n°2 per drum)	2CM300	16	HEXAGON BUSHING	16CM300
3	RETAINING BOLTS(n°8 x drum)		17	BALL BEARING	17CM300
4	SHAFT (n°4 x drum)	4CM300	18	RETAINING RING (n°2 x)	18CM300
5	PENTAGONAL CUTTER (n°70 x)	F300V	19	PULLEY OF THE DRUM	19CM300
6A	WASHER 2 mm (n° 6 x)	6CM3002	20	PULLEY OF THE ENGINE	20CM300
6B	WASHER 4 mm (n° 72 x)	6CM3004	21	BELTS GASOLINE ENGINE (n°4 x)	21CM300
7	BEARING HOUSING	7CM300		BELTS DIESEL ENGINE (n°4 x)	21CM300D
8	RETAINING RING (n°2 x)	8CM300	22	RING	6006 Z JV
9	BALL BEARING (n°2 x)	9CM300	23	COVER	23CM300
10A	SPACER FOR BEARING	10CM300A	24	BEARING HOUSING	24CM300
10B	SPACER FOR HEXAGON SHAFT	10CM300B		MILLING FLAIL FOR PLASTIC	F300VP
10C	SPACER FOR HEXAGON BUSHING	10CM300C		BEAM FLAIL	F300C
11	KEY	11CM300			
12	NUT	12CM300			
13	RETAINING RING	13CM300			
14	RING	6303 Z JV			

DRUM COMPLETE WITH PENTAGONAL CUTTERS (N°70 x)	GBB300CWIDIA
DRUM COMPLETE WITH MILLING FLAIL FOR PLASTIC (N°22 x)	GBB300PL
DRUM COMPLETE WITH BEAM FLAIL (N°344 x)	GBB300CC