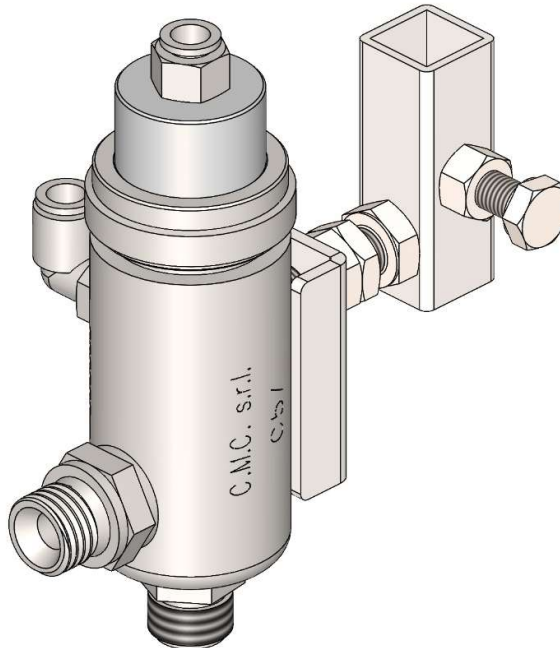




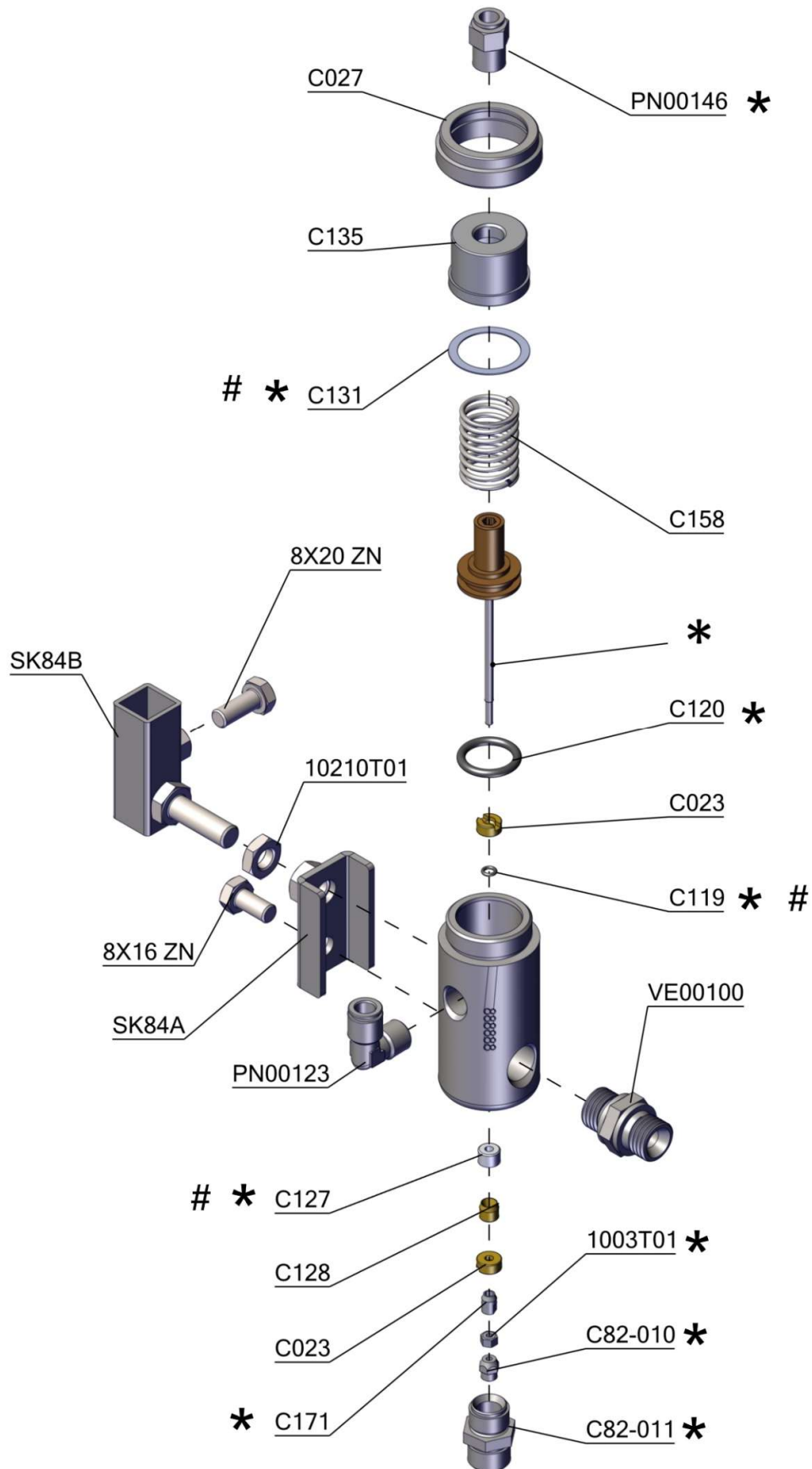
Macchine Traccialinee *Marking Machines*

C57

LISTA PARTICOLARI LIST OF SPARE PARTS



DATI TECNICI		TECHNICAL DATA SHEET	
Pressione aria di comando	Air control pressure	4-6 bar	
Pressione vernice	Paint pressure	120-200 bar	
Pressione massima	Max pressure	225 bar	
Dimensioni	Size	140x120x70	
Peso	Weight	1,1 kg	

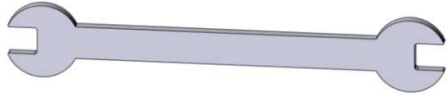


CODICE	DESCRIZIONE	DESCRIPTION	KIT
C023	DADO PREMISTOPPA	PACKING NUT	
C027	GHIERA PREMISCELATORE	RING OF THE PREMIXER	
C119	OR PER AGO	O-RING FOR NEEDLE	* #
C120	OR PER PISTONE	O-RING FOR PISTON	* #
C127	PREMISTOPPA	PACKING	* #
C128	CUNEO DI PRESSIONE	PRESSURE WEDGE	
C131	GUARNIZIONE TEFLON	PTFE GASKET	* #
C135	COPERCHIO CILINDRO	CYLINDER CAP	
C158	MOLLA COMPRESSIONE C57	SPRING FOR C57	
C171	DADO PER AGO C57	NEEDLE NUT FOR C57	*
C82-010	TESTA AGO	NEEDLE HEAD	*
C82-011	NIPPLO OTTURATORE	C82/C94 NIPPLE VALVE	*
PN00123	RACCORDO GOMITO ARIA	AIR CONNECTION	
PN00146	RACCORDO DRITTO ARIA	AIR FITTING 1/4	*
VE00100	NIPPLO INOX CON. CIL. 3/8-3/8	3/8-3/8 CONICAL CYLINDRICAL STAINLESS STEEL NIPPLE	
1003T01	DADO M3	M3 NUT	*
8x16 ZN	VITE TE 8x16 ZINCATA	HEXAGONAL HEAD SCREW 8x16 GALVANIZED	
8x20 ZN	VITE TE 8x20 ZINCATA	HEXAGONAL HEAD SCREW 8x20 GALVANIZED	

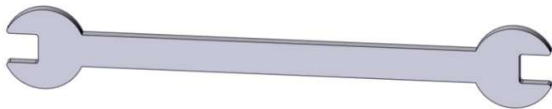
CODICE	KIT RICAMBI	KIT SPARES	LEG.
C159	KIT GUARNIZIONI C57	C57 GASKET KIT	#
C160	KIT RIPARAZIONE C57	C57 REPAIR KIT	*

CODICE	ACCESSORI	OPTIONALS	
SK84A	SUPPORTO PER C57	HOLDER FOR C57	
SK84B	SUPPORTO PISTOLA AUTOMATICA	HOLDER FOR AUTOMATIC GUN	
C205	CHIAVE PER GUARNIZIONE AGO	NEEDLE GASKET KEY	
/	CHIAVE DIMENSIONE 5	WRENCH SIZE 5	
/	CHIAVE DIMENSIONE 5,5	WRENCH SIZE 5.5	
/	CHIAVE DIMENSIONE 7	WRENCH SIZE 7	

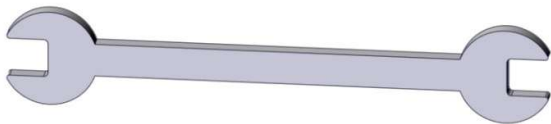
ACCESSORI IN DOTAZIONE / ACCESSORIES PROVIDED



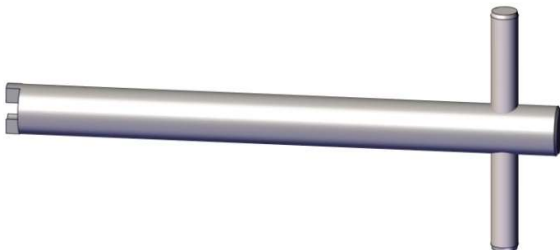
CHIAVE DIMENSIONE 5
UTILIZZATA PER DADO (C171)
WRENCH SIZE 5
USED FOR NUT (C171)



CHIAVE DIMENSIONE 5,5
UTILIZZATA PER DADO M3 (1003T01)
WRENCH SIZE 5.5
USED FOR M3 NUT (1003T01)



CHIAVE DIMENSIONE 7
UTILIZZATA PER LA TESTA AGO (C82-010)
WRENCH SIZE 7
USED FOR THE NEEDLE HEAD (C82-010)

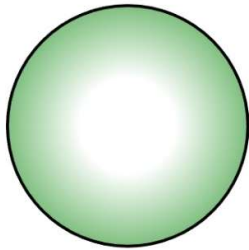


CHIAVE C205
UTILIZZATA PER IL DADO PREMISTOPPA (C023)
WRENCH C205
USED FOR THE PACKING NUT (C023)

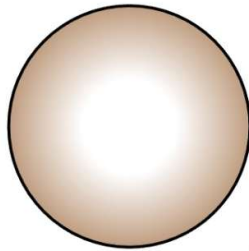
REPAIR KIT C160

ISTRUZIONE DI MONTAGGIO DEL REPAIR KIT
REPAIR KIT ASSEMBLY INSTRUCTIOS

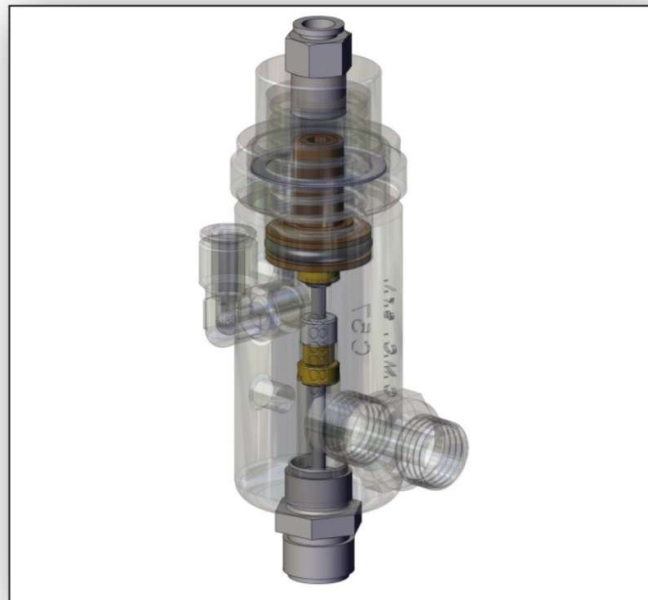
NEL MONTAGGIO DI ALCUNI COMPONENTI SARÀ OBBLIGATORIO
AGGIUNGERE IL GRASSO O IL FRENA FILETTI FORTE
IN ASSEMBLY OF SOME COMPONENTS WILL BE MANDATORY
ADD GREASE OR STRONG THREADLOCKER

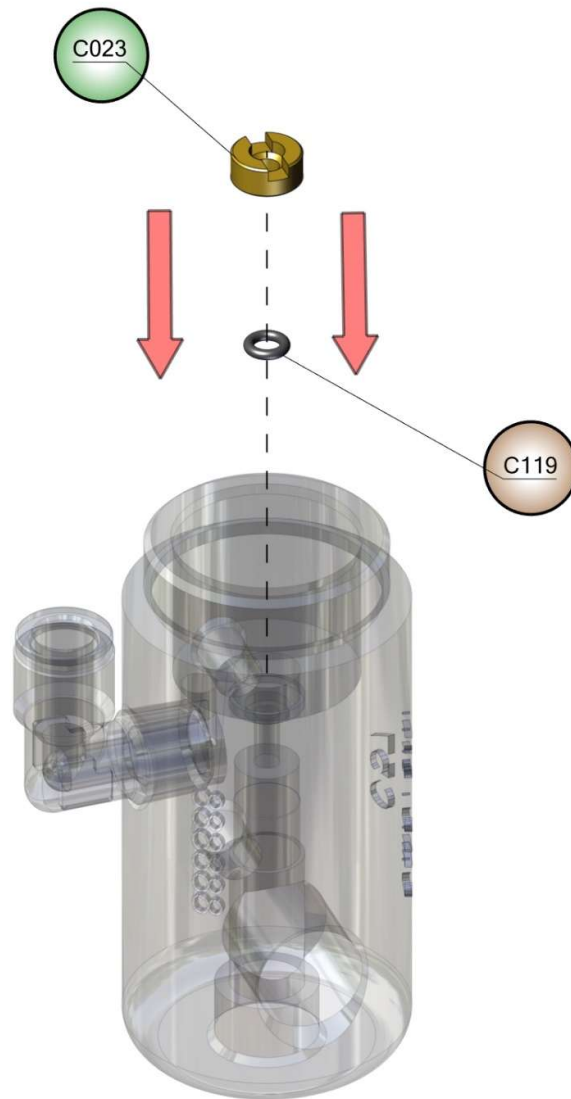


CON QUESTO SIMBOLO VERDE AGGIUNGERE FRENA FILETTI FORTE
WITH THIS GREEN SYMBOL ADD STRONG THREADLOCKER

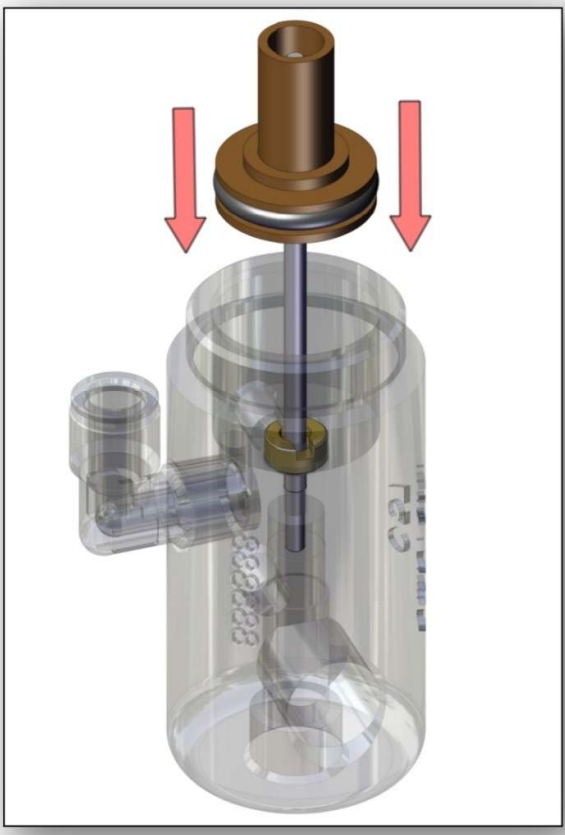
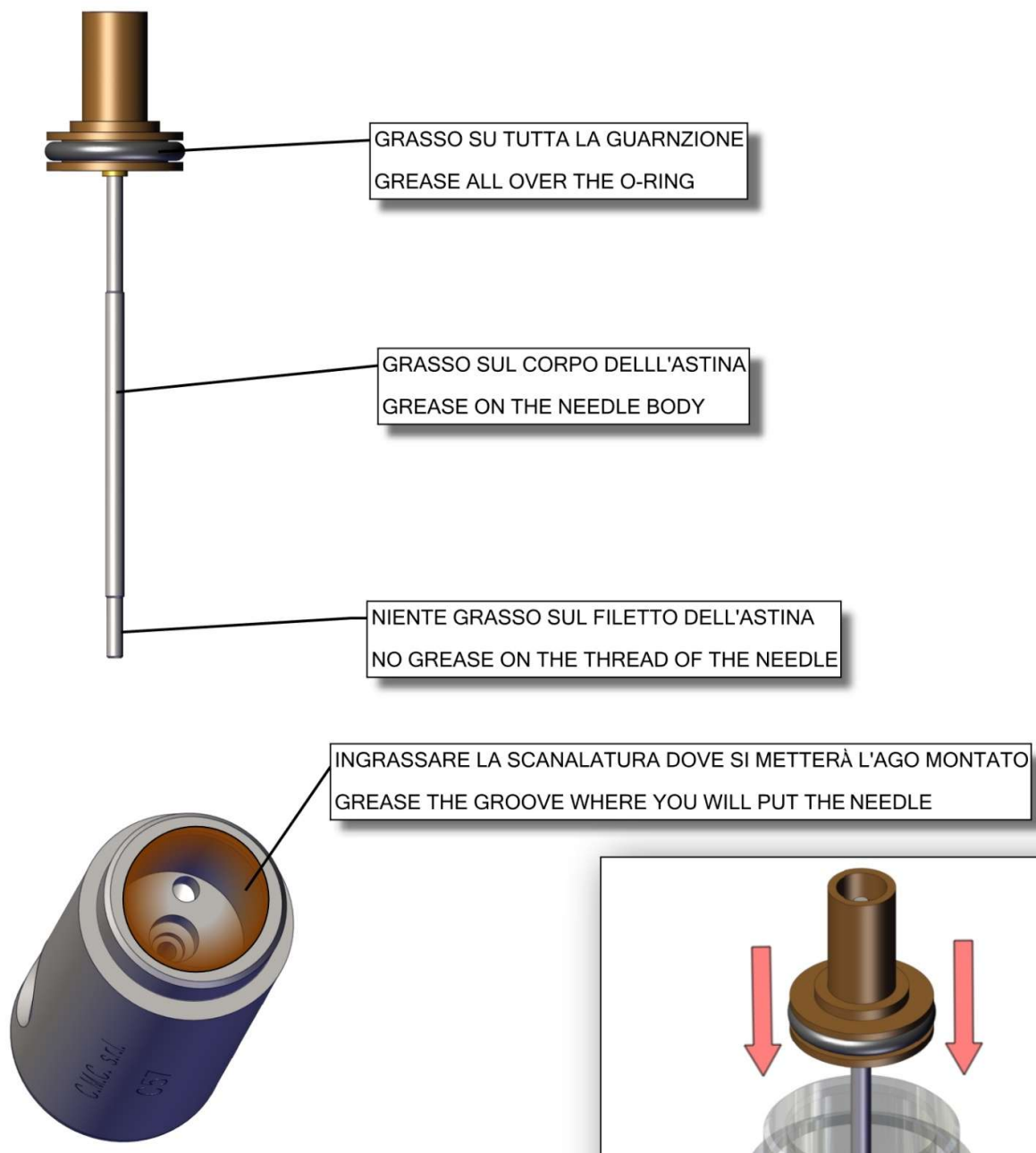


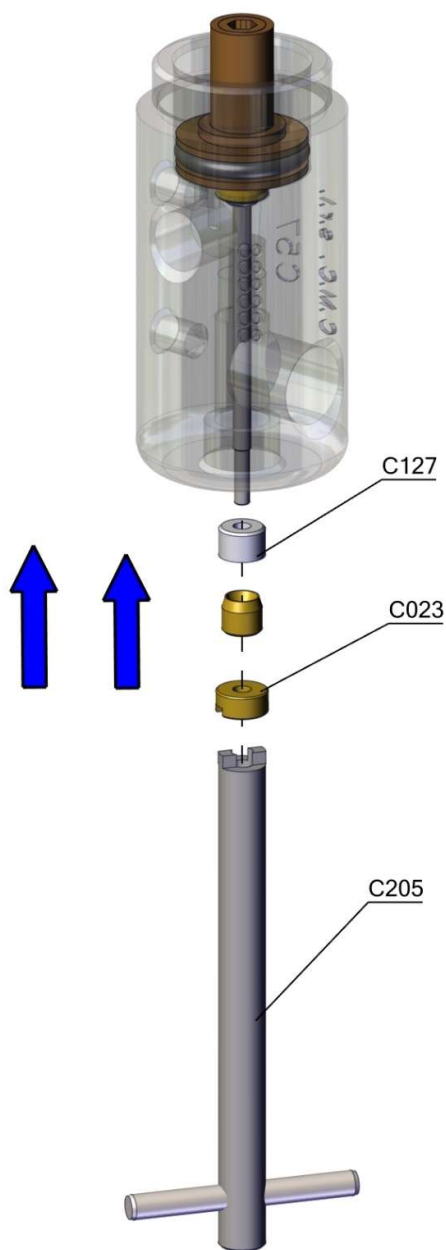
CON QUESTO SIMBOLO MARRONE AGGIUNGERE GRASSO
WITH THIS BROWN SYMBOL ADD GREASE





CAMBIARE GUARNIZIONE C119
CHANGE C119 O-RING

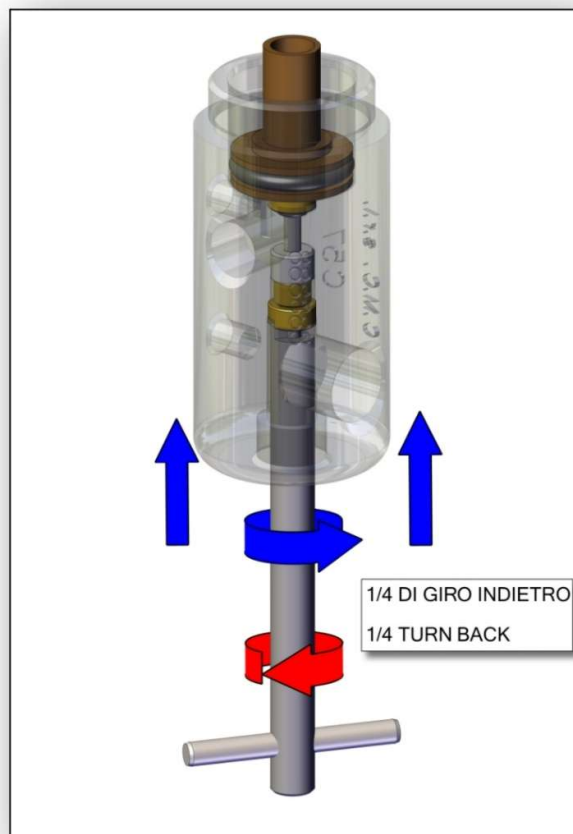


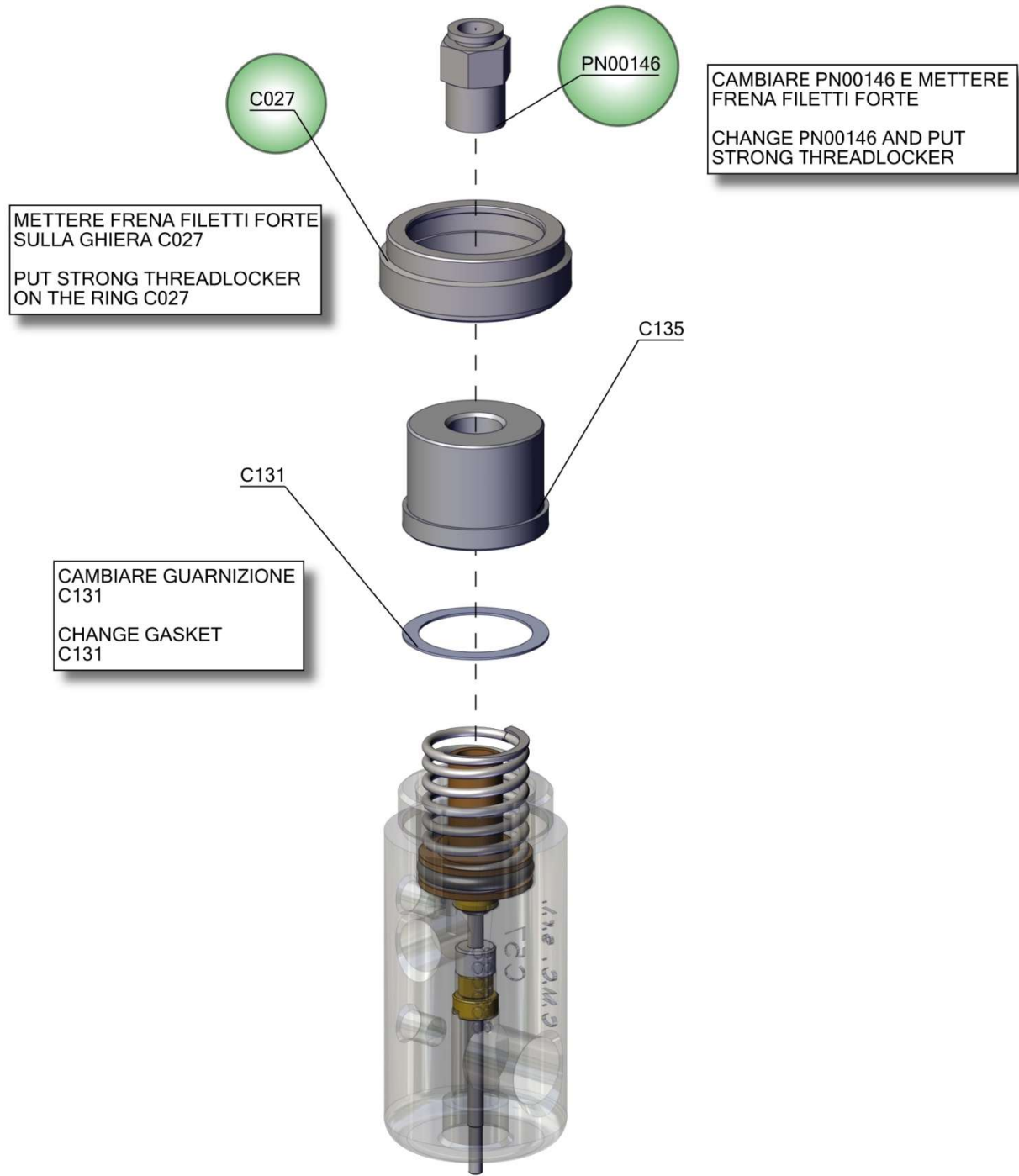


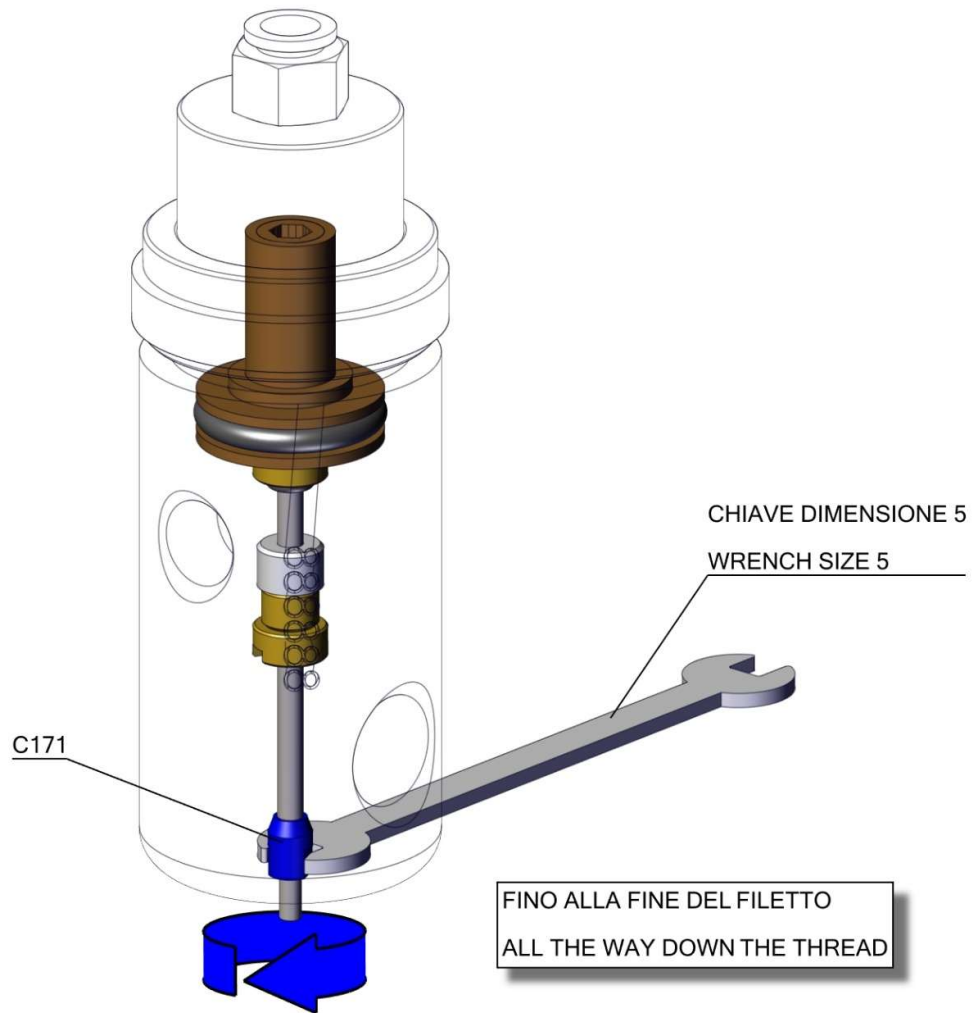
CAMBIARE C127
CHANGE C127

CON LA CHIAVE C205 STRINGERE VITE C023
A FONDO CORSA (2,2Nm)
E FARE 1/4 DI GIRO INDIETRO VERIFICANDO
CHE L'ASTINA SCORRA

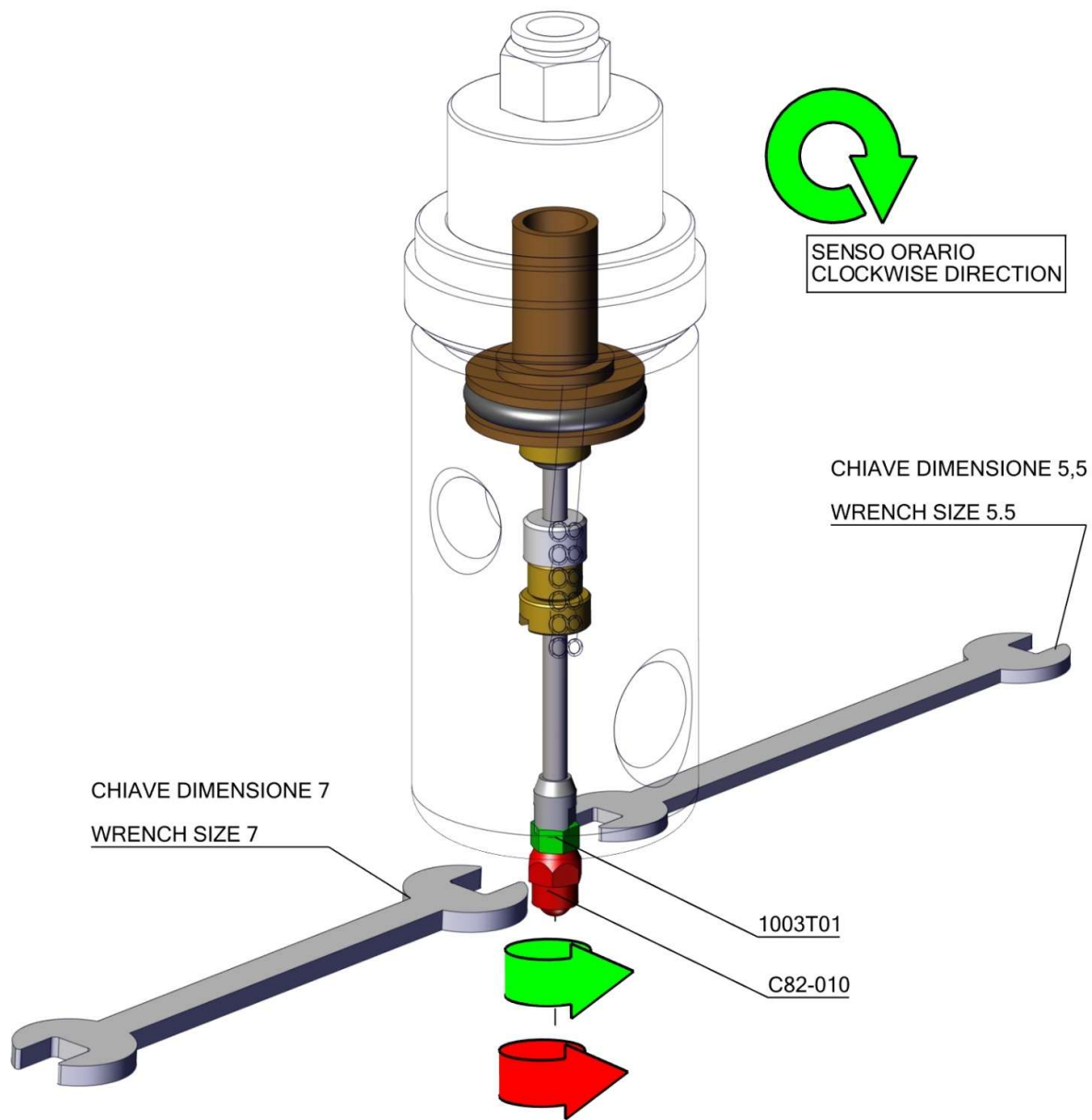
WITH KEY C205 TIGHTEN SCREW C023
UNTIL THE END OF THE THREAD (2.2Nm)
AND MAKE 1/4 TURN BACK VERIFY THAT
THE NEEDLE IS FREE TO MOVE UP & DOWN





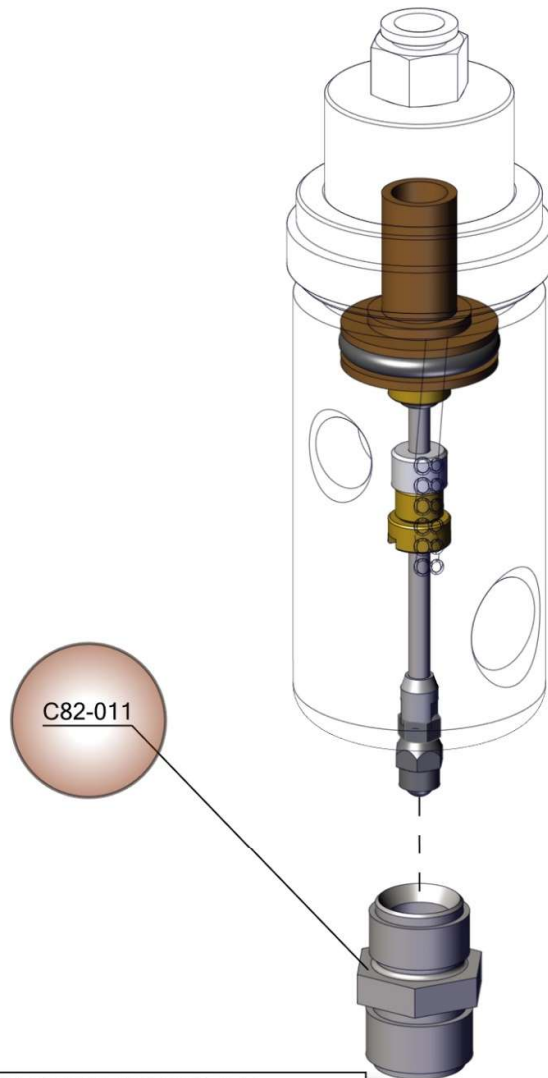


SENSO ORARIO
CLOCKWISE DIRECTION



METTERE FRENA FILETTI SU C82-010
FINO IN FONDO E AVVITARLO
CON LA CHIAVE DEL 7 TENENDO
FERMO IL DADO CON LA CHIAVE DEL 5,5

PUT THREADLOCKER ON C82-010
ALL THE WAY IN AND SCREW IT IN
WITH A SIZE 7 WRENCH, HOLDING THE
NUT IN PLACE WITH THE SIZE 5.5 WRENCH



INGRASSARE IL FILETTO DEL PARTICOLARE C82-011
 AVVITARE CON CHIAVE DIMENSIONE 19 (NON IN DOTAZIONE)

GREASE THE FILET OF PART C82-011
 SCREW IN WITH A SIZE 19 WRENCH (NOT INCLUDED)

CONTROLLO FINALE INTERFERENZA:
 TRA TOCCO C82-010 E C82-011 E SERRAGGIO TOTALE CI DEVE
 ESSERE 0.7- 0.9 mm DI INTERFERENZA, CIRCA 2/3 DI GIRO

FINAL INTERFERENCE CHECK:
 BETWEEN TOUCH C82-010 AND C82-011 AND TOTAL TIGHTENING THERE MUST
 BE 0.7- 0.9 mm INTERFERENCE, ABOUT 2/3 OF A TURN.