

**PRESSURE GUN for glass beads
and antiskid aggregates**



C18

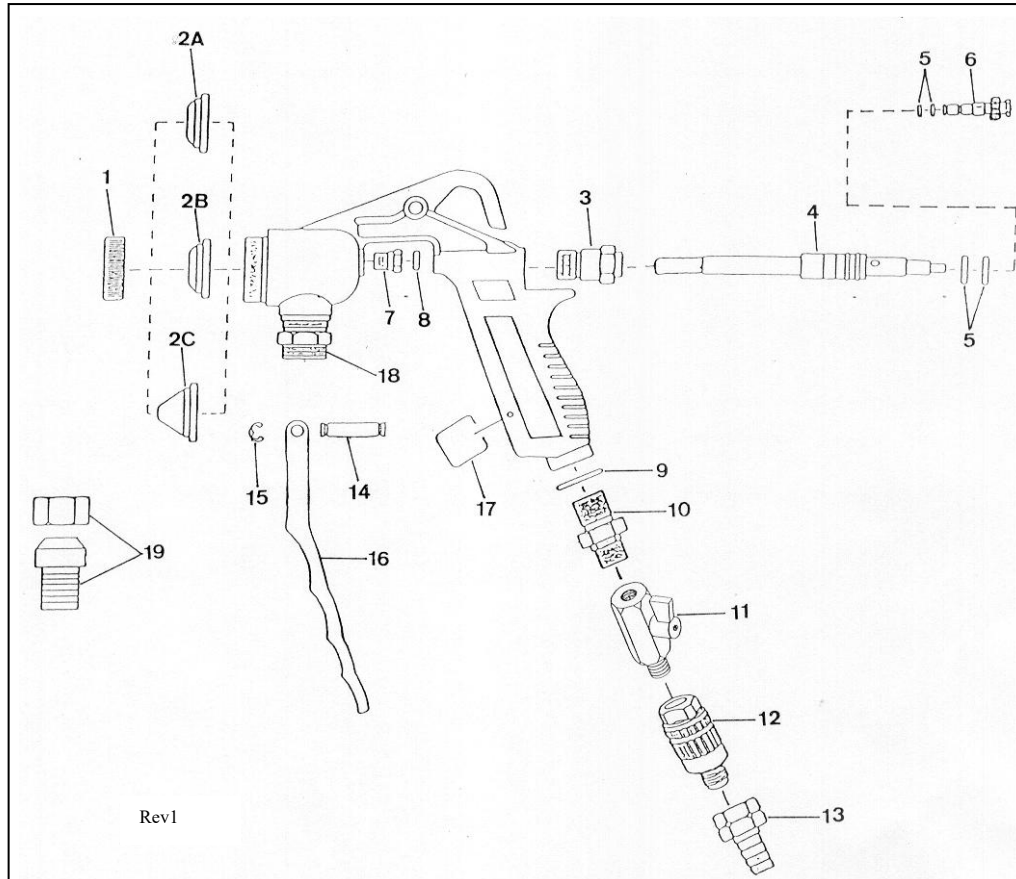
SAFETY DATA SHEET

- ✓ Before the start-up of the equipment, it is necessary to read and understand the instructions listed below.
- ✓ Follow and comply with the accident prevention rules, regulations and directives for the workplaces and the current laws and restrictions.
- ✓ The equipment must be used by properly instructed people.
- ✓ Do not use the gun in those operations for which it has not been designed.
- ✓ Read all the warnings on the products you use.
- ✓ Use approved masks.
- ✓ Do not aim the gun at people or animals.
- ✓ Disconnect the gun from the compressed air line and depressurize the equipment before any repair.
- ✓ Use the gun in a well-ventilated area where there are no risks of explosion or fire.
- ✓ Once the work is finished, close the product regulator (no.6) completely to prevent vaporization.

PRESSURE GUN FOR GLASS BEADS AND ANTISKID AGGREGATES

No.	Ref.	Description
1	50403	Nozzle nut
2A	504044	Nozzle Ø 4
2B	504046	Nozzle Ø 6
2C	504048	Nozzle Ø 8
3	50405	Bushing
4	50640	Needle with valve
5	50407	Joint
6	50408	Product regulator
7	50409	Packing nut
8	50410	Joint
9	50412	Joint
10	50413	Fitting
11	55024	Shut-off valve
12	500222	Air flow regulator
13	50112	Pin with nut
14	50417	Trigger stud
15	50416	Seeger ring
16	50415	Trigger
17	50414	Trigger fixer
18	50411	Fitting 3/4
19	50418	Pin with nut

PRESSURE GUN FOR GLASS BEADS AND ANTISKID AGGREGATES



SPECIFICATIONS:

- Available steps: 4 mm, 6 mm, 8 mm.
- Required pressure: 2 bar.
- Air consumption: 90 l/min.
- Air connection: Pin Ø 8.

GENERAL USE:

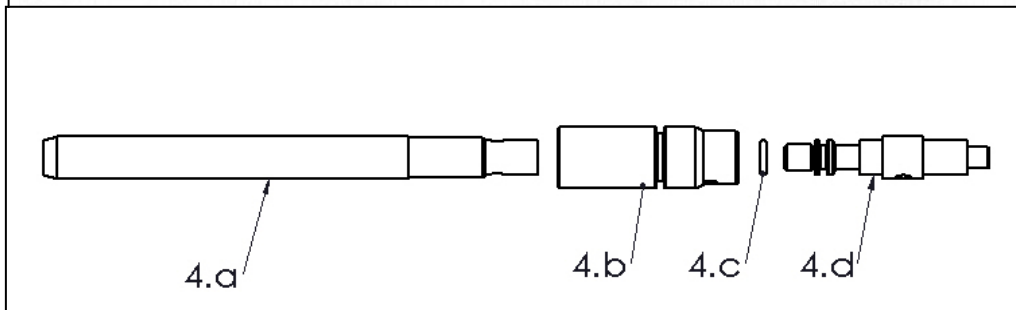
- Glass beads
- Glass beads mixed with antiskid aggregates

FEATURES:

- Stainless steel nozzle.
- Air inlet shut-off valve.
- Trigger fixing system which facilitates its continued use.
- Stainless needle with valve.

WARRANTY CERTIFICATE:

- It extends only and exclusively against any manufacturing defect.
- The period of validity is 1 year from the date of purchase.
- Warranty covers the repair in our facilities or technical services.
- Excluded from any warranty is the machine:
 - Whose fault is due to bumps, falls or similar facts.
 - That has been disassembled previously to its reception in our facilities.



NOTICE:

- Spray cleaning solvent to remove installation oils before using the equipment for the first time.
- Check the viscosity of the product.
- Make the mixture according to the manufacturer's instructions. Filter the product, if it is allowed, before projecting it.
- Remember that corrosive or abrasive products shorten the lifetime of the device.
- Never use products that contain halogenated hydrocarbons, its use may cause chemical reactions with danger of explosion.

TIPS:

- Try to use the product regulator fully open to prevent premature wear on the needle and product.
- Check the application distance.
- Make circular movements on the application area.

START-UP:

When assembling the equipment, make sure you join together correctly all the hose connections that connect the equipment to each other.

- Adjust the pressure inside the pressure tank until the product is projected between 15 and 20 cm from the gun. (This operation is carried out without pulverized air of the gun, cutting it off from the shut-off valve)

- Adjust the air in the gun until you achieve the desired spraying degree. In general, the spraying pressure must be higher than the product pressure.
- Perform spraying tests, adjusting all the pressures, inside of the tank and the spraying one. Remember that the air inlet of the gun is also equipped with a flow regulator.

CLEANING:

- Perform a thorough cleaning of the equipment after the working day.
- Use the cleaning solvent appropriate to the product. Do not leave it inside the tank for long periods of time.
- Never use sharp objects to clean the air nozzle.
- Grease the threads and friction areas using oil SAE 10.