



LOW PRESSURE PAINT GUN WITH ATOMIZING AIR

This paint gun is compatible with all kinds of products thanks to its paint circuit made of stainless steel.

CONNECTIONS:

Opening air	1/4 "
Atomizing air	3/8 "
Paint inlet	3/4 "
Ø passage of paint	14.5 mm

PAINT NOZZLE:

Ø 6 to 10 mm

AIR NOZZLE:

Ø 10 to 13.8 mm

EXTERNAL NOZZLES

A wide choice of external nozzles in stainless steel or in tungsten carbide is available, to meet all your needs in line width and performance. The carbide nozzles have a much longer durability than the stainless steel ones (about 4 times). The choice of the external nozzle depends on the diameter of the paint nozzle (see the list of nozzles on our website).

An inlet is provided for flushing the head of the gun (recommended for water-based paints). The plug of this inlet can be replaced by a connection (on request). In order to limit the width of the line, a system made of tungsten carbide can be fixed on the gun (option).

RECOMMENDATIONS

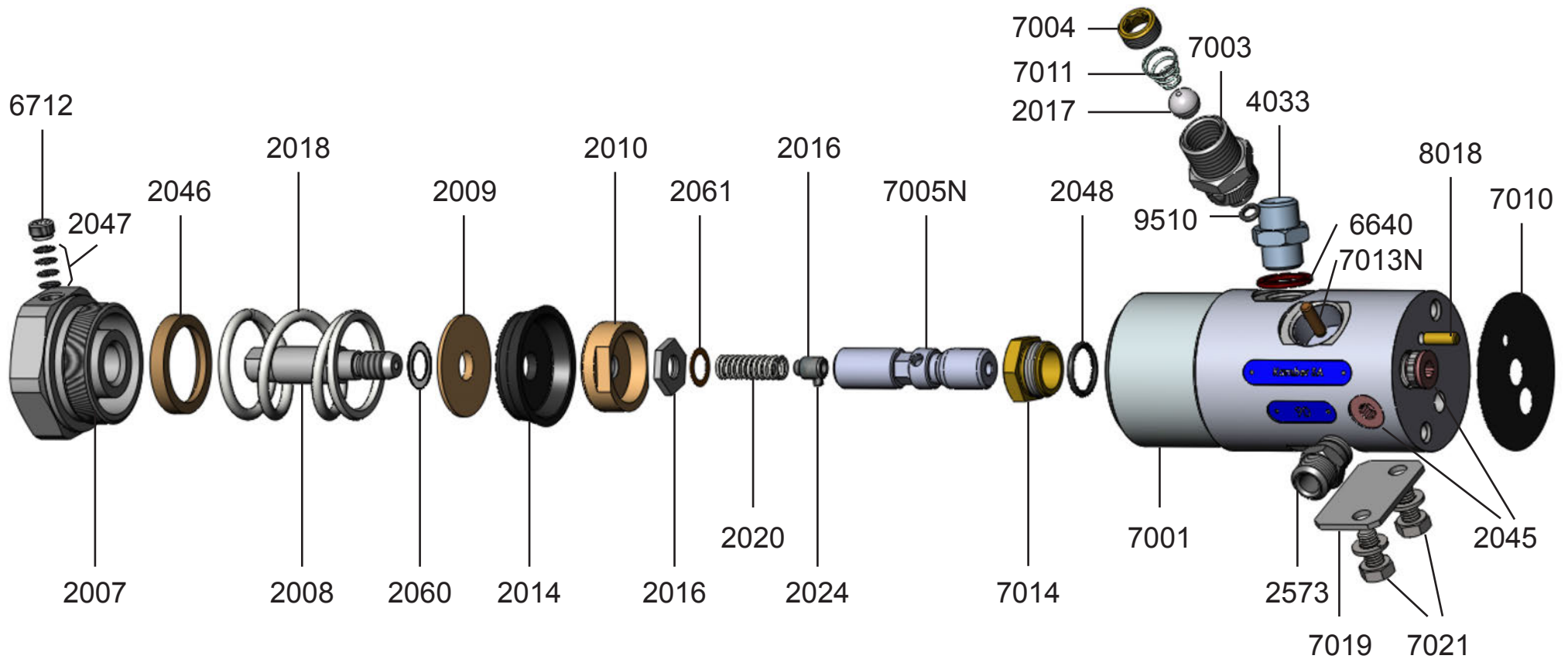
- For paint connection, use a hose with inner Ø of at least 19 mm
- For atomizing air, use a hose with inner Ø of 10 mm
- To get good performance, use an air atomizing pressure lower than the pressure in the tank
- Use an opening air pressure of at least 6 bar (87 psi) and an air atomizing pressure of maximum 5 bar (72 psi)

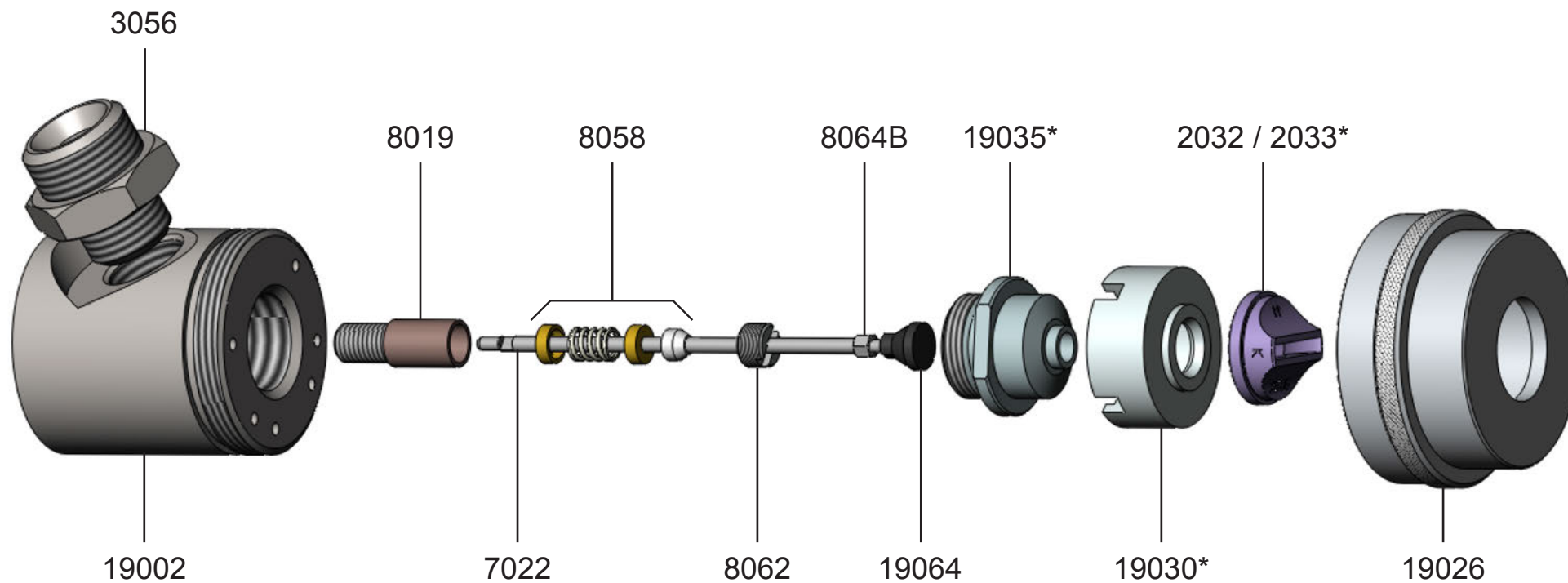
SPECIFICATIONS

Dimensions:	220 x 70 mm
Weight:	3.1 kg

Edwin Kamber SA reserves the right to change at any time this information







- *Indiquer N° ou Ø
- *Indicate no. or Ø
- *Indicar n.º o Ø
- *Nr. oder Ø angeben

NOZZLES LIST

Set of nozzles	B	C	D	E	F			
Needle ∅ Article no.	11.0	11.0	11.0	11.0	11.0			
	7022 + 19064							
Material nozzle ∅ Article no.	6.0	7.0	8.0	9.0	10.0			
	19035B	19035C	19035D	19035E	19036F			
Air nozzle ∅	10	11.8	11.8	13.8	13.8	Slot width (mm)	Line width (cm)	Application
	19030AB	19030CD		19030EF				
External nozzle No.	20 – 20					2.5	10 – 15	large output
	21					2.5	15 – 23	large output
Stainless steel = 2032-	22	22				3.0	15 – 23	very large output
Carbide = 2033-		23				2.5	20 – 40	large output
		24				2.5	50	normal
		25 – 25				3.0	10 – 18	very large output
		27				2.0	20 – 40	large output
		28				3.0	20 – 40	very large output
			40	40	40	3.0	10 – 16	large output
			42	42	42	3.8	10 – 25	very large output
			44	44	44	3.5	25 – 35	very large output

Example for gun with set of nozzles B

- Needle: ∅ 11.0 (7022 + 19064)
- Material nozzle: ∅ 6.0 (19035B)
- Air nozzle: ∅ 10.0 (19030AB)
- External nozzle: 2033-20 or 2032-20