

UNIVERSAL TECHNICAL DATA SHEET (2 component cold plastic road marking machine)

Dimensions: 150x98x h110 cm; Weight: 270 Kg



Photo doesn't show standard machine.

Gasoline engine:

- power 7 HP
- electric starting**, with pull start for emergency
- alternator to recharge the battery
- centrifugal pulley

Hydraulic drive with:

- 2 motors directly coupled on rear wheels
- hand-grip control: controls forward, **reverse** and neutral gear
- VARIABLE-FLOW PUMP**: guarantees more **safety** for operator and better **performance**. Allows to overcome steep slopes

Parking brake on rear wheels

Swivel front wheel with stabilizer springs, to stripe very sharp curves. It can be locked or unlocked during the work by a pneumatic control on dashboard. It's also possible to totally remove springs and adjust steering hardness by proper regulator

Telescopic pointer for easily following pre-marking or precisely matching existing line

Engine shut-off safety device if operator leaves the handlebars

Gravity tank for cold plastic: capacity 30 l

Gravity tank for powder catalyst: capacity 5 l.
With electric dosing device, electronically adjustable

Gravity glass bead tank, capacity 15 l

Single-stage two-cylinder compressor:

- flow air rate 320 l/min
- with **pressure limiting valve**

Shoe for flat line, with adjustable opening for regulation of material to apply. Line width to be chosen among available widths. (*Also available shoes for profile line and shoes for agglomerate, look at optional*)

Automatic glass bead gun, with air of distribution. Diffuser with adjustable slope and adjustable opening angles. Closing delay regulator for bead gun

MAX. LINE WIDTH: 25 cm
(achievable only with proper optional equipment)

1 priority valve: makes mixer speed independent from engine revolutions



USABLE PRODUCTS: 2-component cold plastic (not spray)

Machine is equipped with all safety devices according to EU requirements. Machine conforms to:

- **EU Directive 2006/42/EC on Machinery**
- **EU Directive 14/68/EU for Pressure Equipment (PED directive)**

OPERATION OF MACHINE

2 components (the catalyst and the plastic) are automatically mixed in the shoe.

Depending on equipment (look at optional) is possible to mark: high thickness flat line, agglomerate line, profile line, only ribs.

Glass beads are dropped on and distributed with supplementary air. Bead delay regulator allows to apply beads up to the end of the line, accurately matching the paint end.

Plastic, catalyst and bead tanks are gravity designed to fill them up during motion and to eliminate stops that can cause the product catalysis in the shoe

OPTIONAL EQUIPMENT:

- **Electronic spacing device C8000 + program for profile line**, with:

- possibility to select 7 different skip line patterns
- possibility to record: total metres made (paint+space); total metres striped (only paint)
- sound speed alarm: rings when operator works outside range of minimum speed and maximum speed. Min. and max. speeds are adjustable. (*Maintaining constant speed is important for getting uniform paint film*)
- profile program: sets the length of each bar and the distance between 2 bars

- **Pointer with pneumatic lift**, for raising and lowering the pointer automatically. It is useful particularly when the line ends at sidewalk or curb: by control on dashboard operator can lift pointer up and finish line without stops

- **Trailer with standing driver**

- **Trailer with driver seat**

- **Kit for agglomerate line** consisting of: roller with replaceable teeth, roller holder with hydraulic motor, 1 priority valve which makes roller speed independent from the number of engine revolutions

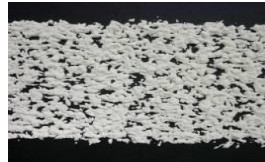
Shoes for agglomerate line are available in following widths:

- shoe for agglomerate line width 10 cm

- shoe for agglomerate line width 12 cm

- shoe for agglomerate line width 15 cm

- shoe for agglomerate line width 20 cm



- shoe for agglomerate line width 25 cm.

Attention: shoes for agglomerate can be used only if striper is equipped with optional kit for agglomerate line

Shoes for flat line/profile line are available in following widths:

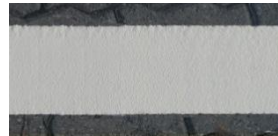
- shoe for flat line and profile line width 10 cm

- shoe for flat line and profile line width 12 cm

- shoe for flat line and profile line width 15 cm

- shoe for flat line and profile line width 20 cm

- shoe for flat line and profile line width 25 cm.



Attention: shoe for flat line and shoe for profile line are the same shoe, but to do profile line is necessary the optional electronic spacing device with profile program.



Hand-grip control, handy and safe: you control the forward and backward movement by turning the knob, without leaving the handlebar

Gravity tank for powder catalyst

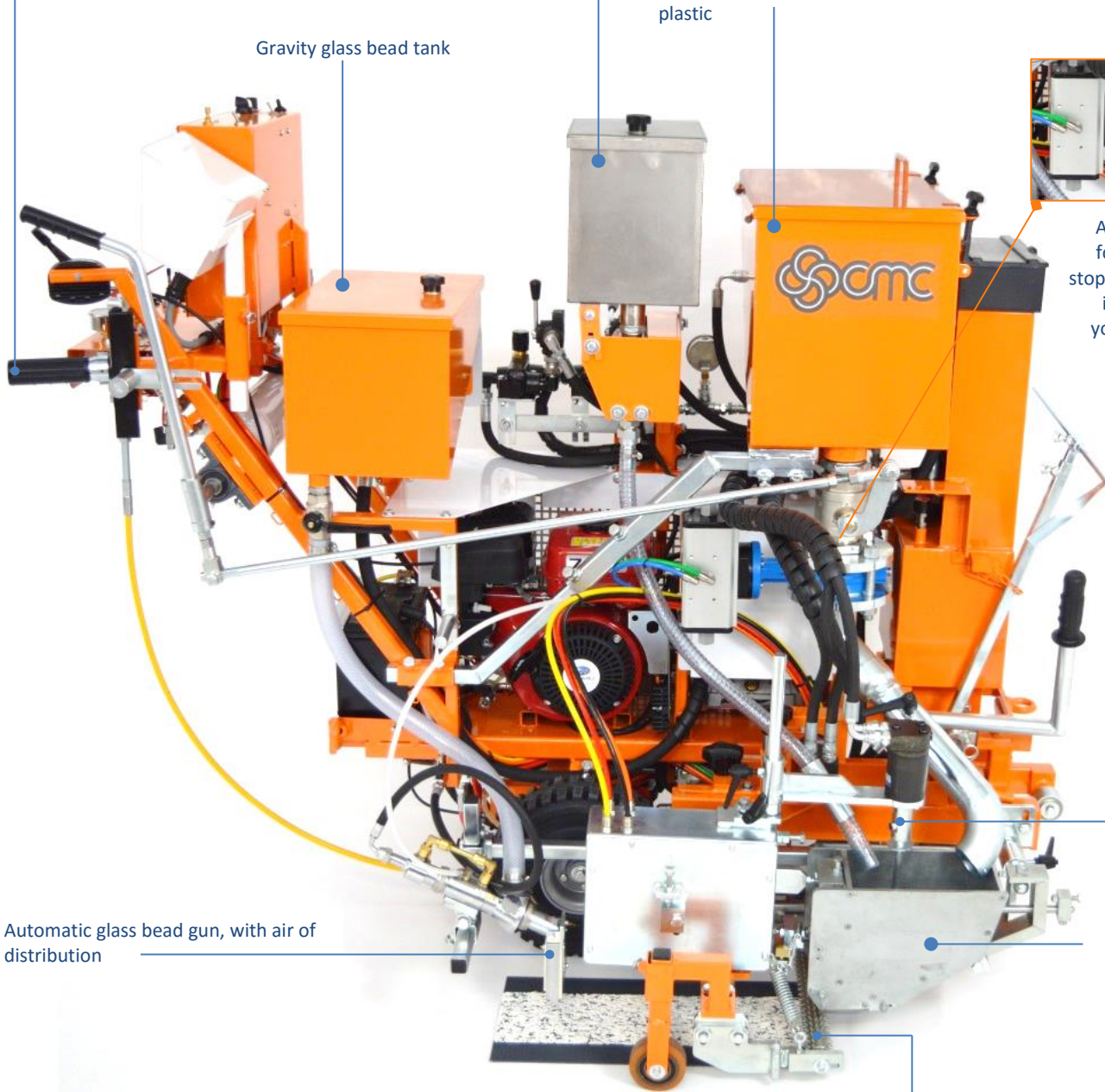
The tanks (of plastic, catalyst and glass beads) are gravity to allow the filling during movement, avoiding stops that could cause the catalysis of plastic in the shoe

Gravity tank for cold plastic

Gravity glass bead tank



Automatic system for plastic closing: stops the plastic flow in the shoe when you close the shoe



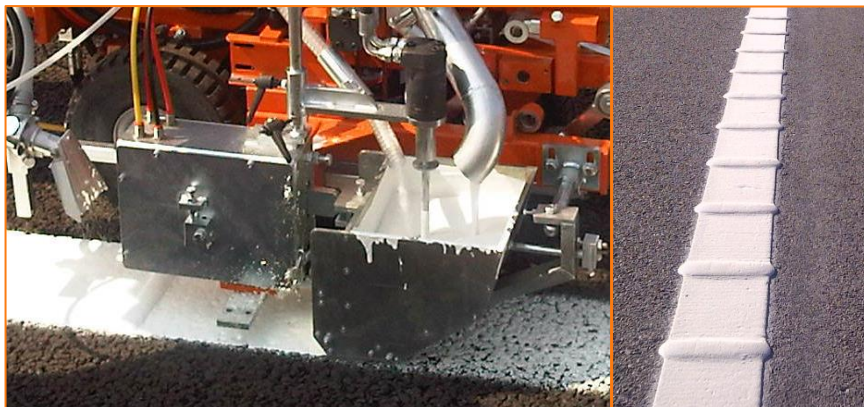
Mixer: for mixing the 2 components directly in the shoe

Automatic glass bead gun, with air of distribution

Shoe for agglomerate line (optional)

Roller for agglomerate line (optional)

Shoe for flat and profile line (optional)



The hydraulic drive with VARIABLE-FLOW PUMP makes these machines unbeatable on slopes: they can overtake steep slopes (even slopes of 30%!) without dangerous and sudden movements. The control of drive never become hard, not even on the slopes: it is always comfortable and easy to manage, allowing a fast change of speed in safety conditions. So the daily operations of loading and unloading of the striper from the transport van are easier, faster and more safe.

The variable flow pump is needful to have a professional striper with high performance and safety.

